

Hinton Pulp
A division of West Fraser Mills Limited
Hinton, Alberta

AIR QUALITY MONITORING
April 2015
Monthly Report

Prepared by:

West Central Airshed Society
Drayton Valley, Alberta





May 8th, 2015

Hinton Pulp
A Division of West Fraser Mills Ltd.
Mr. Phil Whitney
760 Switzer Drive
Hinton, Alberta
T7V 1V7

Dear Mr. Whitney:

**Monthly Ambient Air Quality Monitoring Report for April 2015
For Hinton Pulp – A Division of West Fraser Mills Ltd.**

Enclosed are the reports for the continuous ambient air quality monitoring station of the West Central Airshed Society network.

Network Station is AMS 906 Hinton
Identified as:

The person responsible for this reporting is Robert Scotten Executive Director of West Central Airshed Society.

The following operational notes are included as required by the Air Monitoring Directive:

1. Concentrations in excess of the Clean Air (Maximum Levels) Regulation:

There were no readings occurring in April 2015 in excess of the one – hour average guidelines as indicated in Air Monitoring Directive Section III.A.3. (a) for H₂S. The maximum one-hour average reading was 10.46 ppb, occurring April 8th. There were no readings in April 2015 in excess of the twenty–four hour average guidelines as indicated in Air Monitoring Directive Section III.A.3. (a) for H₂S. The maximum 24-hour average reading was 2.68 ppb.

There was one (1) reading occurring in April 2015 in excess of the one – hour average guidelines as indicated in Air Monitoring Directive Section III.A.3. (a) for PM_{2.5}. The maximum one-hour average reading was 121.59 µg/m³, occurring April 20th.

2. Operational times less than 90 percent:

There were no operational times less than 90 percent in the month of April.

3. Monitoring Notes:

AMS 906 (Hinton)

All analyzers and meteorological equipment returned uptimes of 100 percent.

If additional information is required please contact Patrick Andersen at (780) 514-3533 or (403) 505-1041.

Sincerely,



Robert Scotten
Executive Director



Patrick Andersen
Environmental Specialist

Forest Products Industry Monthly Report Summary

Hinton
Plant Name/Location

Hinton Pulp - A Division of West Fraser Mills Ltd.
Company

License Number	Report Date	
	Year	Month
	2015	April

TOTAL EMISSIONS FOR MONTH (IN TONNES)

POLLUTANT	INCINERATOR STACK	FLARE	MISCELLANEOUS
SO ₂			

"HOURS" OF EXCEEDED STACK LICENSED LIMITS (CEM)

POLLUTANT	STACK TYPE	1-HR AVG CONCENTRATION	1-HR AVG MASS EMISSION	24-HR AVG MASS EMISSION	STACK TOP TEMP.	% TIME STACK MONITOR OPERATIONAL
SO ₂						

STATIC AMBIENT MONITORING

PARAMETER	NO. OF STATIONS	PEAK READING	AVG. OF NETWORK	NO. OF STATIONS OVER GUIDELINES
T.S.				
H ₂ S				

CONTINUOUS AMBIENT MONITORING

PARAMETER	STATION NUMBER	% TIME OPERATIONAL	1-HR AVERAGE		24-HR AVERAGE	
			MAXIMUM CONCENTRATION (ppm)	NO. READINGS > REGULATIONS	MAXIMUM CONCENTRATION (ppm)	NO. READINGS > REGULATIONS
Wind	906	100.0	n/a	n/a	n/a	n/a
TRS	906	100.0	0.010	0	0.003	0
PM _{2.5}	906	100.0	121.6 µg/m ³	1	20.92 µg/m ³	0

SIGNATURE OF COMPANY REPRESENTATIVE

FOR ALBERTA ENVIRONMENT USE ONLY

WEST CENTRAL AIRSHED SOCIETY

**CONTINUOUS AMBIENT AIR QUALITY
MONITORING PROGRAM
MONTHLY REPORT
CONTINUOUS AIR QUALITY**

**AMS 906
HINTON
APRIL 2015**

Operations and Data Collection by:
West Central Airshed Society
Drayton Valley, Alberta

QA/QC, Data Validation and Reporting by:
West Central Airshed Society
Drayton Valley, Alberta

Summary Report

Continuous air quality/meteorological monitoring measurements

West Central Airshed Society

Hinton Pulp / Hinton Station 906												24 Hour Average Max (ppm)
April 2015												
Parameter	Calibration Hours	Number of Data	Percent Uptime	Mean	Min	Max	P10	Q1	Percentile Median	Q3	P90	
TRS (ppb)	38	682	100.0	0.9	0.0	10.0	0.1	0.2	0.3	1.0	2.3	0.003
SO ₂ (ppb)	38	682	100.0	0.4	0.0	6.5	0.0	0.0	0.0	0.2	1.2	0.002
O ₃ (ppb)	38	682	100.0	34.0	1.7	60.6	8.3	20.1	37.7	48.2	53.4	0.044
NO (ppb)	38	682	100.0	1.8	0.0	34.4	0.1	0.2	0.8	1.7	4.2	-
NO ₂ (ppb)	38	682	100.0	5.7	0.2	33.1	1.3	2.3	3.7	7.5	13.6	0.010
NO _x (ppb)	38	682	100.0	7.5	0.1	67.5	1.5	2.9	4.7	9.6	17.3	-
Particulate Matter 2.5 microns (µ/m ³)	8	712	100.0	8.9	1.2	121.6	3.8	4.9	7.0	10.3	16.1	20.92 ug/m3
Wind Speed (kph)	0	720	100.0	4.0	0.1	16.2	0.7	1.5	3.4	5.9	8.4	-
Temperature (°C)	0	720	100.0	4.5	-7.7	22.5	-2.6	-0.1	3.4	9.0	13.3	-
Relative Humidity (%)	0	720	100.0	52.8	9.0	91.7	18.9	28.2	54.5	74.9	85.1	-
Std Dev Wind Direction (deg)	0	720	100.0	49.3	12.9	107.6	27.0	34.9	44.9	59.2	80.6	-
Std Dev Wind Speed (kph)	0	720	100.0	2.9	0.0	8.8	1.1	1.5	2.5	4.1	5.5	-



WCAS - Hinton
Summary of Hourly Averages

Total Reduced Sulphur (TRS) - ppb
April 2015

Maximum Value: 10.46 ppb on Apr 8 05:00		Maximum Daily Average: 2.68 ppb on Apr 8		Hours in Service: 720																																												
Minimum Value: 0 ppb on Apr 1 13:00		Minimum Daily Average: 0.19 ppb on Apr 6		Hours of Data: 682																																												
Maximum Diurnal Average: 1.52 ppb at hour 5		Minimum Diurnal Average: 0.35 ppb at hour 14		Hours of Missing Data: 38																																												
Monthly Average: 0.892 ppb		Percentiles: P ₁ = 0.1 P ₁₀ = 0.1 Q ₁ = 0.2 Median = 0.3 Q ₃ = 1.0 P ₉₀ = 2.3 P ₉₉ = 7.2		Hours of Calibration: 38																																												
				Percent Operational Time: 100.0																																												
Day	Hourly Period Ending At																								Daily Average	Daily Maximum																						
	1	2	3	4	5	6	7	8	9	10	11	12	13	14	15	16	17	18	19	20	21	22	23	24																								
1-Apr	9	3	4	Z	6	7	2	1	1	0	0	0	0	0	0	0	0	0	0	0	0	1	1	1.55	8.82																							
2-Apr	2	4	5	Z	2	2	2	6	5	2	0	0	0	0	0	0	0	0	0	0	0	1	1	1.48	6.06																							
3-Apr	0	0	3	Z	3	2	1	1	5	6	2	0	0	0	0	0	0	0	0	0	0	0	0	1.13	6.19																							
4-Apr	0	0	0	Z	0	0	0	0	0	0	0	0	0	0	0	0	0	0	0	0	0	0	0	0.20	0.26																							
5-Apr	0	0	0	Z	0	0	0	0	0	0	0	0	0	0	0	0	0	0	0	0	0	0	0	0.21	0.27																							
6-Apr	0	0	0	Z	0	0	0	0	0	0	0	0	0	0	0	0	0	0	0	0	0	0	0	0.19	0.28																							
7-Apr	0	0	1	Z	2	4	1	7	4	3	0	0	0	0	1	1	1	1	0	0	1	0	0	1.37	7.38																							
8-Apr	2	3	7	Z	10	7	3	1	3	3	0	0	0	0	0	0	1	1	2	2	5	5	6	2.68	10.46																							
9-Apr	7	6	4	Z	3	2	3	1	1	1	0	0	0	0	0	0	1	3	2	0	3	1	1	1.86	7.20																							
10-Apr	1	1	1	Z	1	1	1	1	1	5	4	1	1	0	1	1	1	3	3	3	2	0	0	1.45	4.68																							
11-Apr	0	0	0	Z	0	0	0	1	1	1	0	0	0	0	0	1	0	1	1	1	1	1	2	0.56	1.70																							
12-Apr	1	1	1	Z	1	1	2	1	2	2	1	1	1	0	0	0	1	0	1	1	1	2	6	1.34	5.93																							
13-Apr	9	8	3	Z	2	2	1	1	1	4	7	1	0	0	0	0	0	0	0	1	1	0	0	1.87	9.29																							
14-Apr	0	0	0	Z	1	1	0	0	0	0	1	0	0	0	0	0	0	0	0	0	6	3	1	0.81	5.58																							
15-Apr	0	0	1	Z	0	1	1	C	C	C	C	C	C	C	C	1	1	1	1	0	2	4	3	--	4.05																							
16-Apr	2	1	0	Z	0	0	1	1	2	2	1	0	1	1	1	1	1	1	2	1	0	0	0	0.96	2.43																							
17-Apr	0	0	0	Z	0	0	0	0	0	0	0	1	2	1	0	1	1	0	0	1	0	0	0	0.42	1.95																							
18-Apr	1	1	2	Z	6	5	6	6	2	0	0	0	0	0	0	0	0	0	0	0	0	0	0	1.35	6.47																							
19-Apr	0	0	0	Z	1	1	3	1	3	1	1	0	0	0	0	0	0	0	1	1	1	0	1	0.73	3.01																							
20-Apr	1	1	0	Z	1	1	1	1	1	1	0	0	0	0	0	0	0	0	0	0	0	0	0	0.46	1.23																							
21-Apr	0	0	0	Z	1	2	1	6	4	3	2	1	0	0	0	0	0	0	1	0	0	0	0	1.06	6.12																							
22-Apr	0	0	0	Z	1	1	2	2	1	1	0	0	1	0	0	0	0	0	0	0	0	0	0	0.54	1.82																							
23-Apr	0	0	0	Z	0	0	0	0	0	0	0	0	0	0	0	0	0	0	0	0	0	0	0	0.19	0.48																							
24-Apr	0	0	0	Z	0	0	0	0	0	0	0	0	0	0	0	0	0	0	0	0	0	0	0	0.20	0.28																							
25-Apr	0	0	0	Z	0	0	0	0	0	0	0	0	0	0	0	0	0	0	0	0	0	0	0	0.20	0.30																							
26-Apr	0	0	0	Z	0	0	0	0	0	1	0	0	0	0	0	0	0	1	1	2	0	0	0	0.40	1.58																							
27-Apr	0	0	0	Z	0	0	0	1	1	1	0	0	1	1	1	1	1	1	0	0	1	1	0	0.57	1.40																							
28-Apr	0	0	0	Z	0	0	0	0	0	0	0	0	1	1	1	1	1	1	1	1	0	0	0	0.50	1.30																							
29-Apr	0	0	0	Z	1	0	0	1	0	0	0	0	1	0	2	1	1	1	0	1	0	0	0	0.56	1.63																							
30-Apr	2	0	0	Z	0	0	0	0	1	1	2	1	1	0	1	0	1	0	1	1	2	1	0	0.76	2.37																							
																								1.40	1.11	1.28	--	1.52	1.45	1.09	1.50	1.41	1.34	0.87	0.41	0.45	0.35	0.39	0.38	0.47	0.54	0.59	0.68	0.76	0.86	0.79	0.85	Diurnal Average
																								9.29	8.24	6.51	--	10.46	7.20	6.15	7.38	4.66	6.19	6.59	1.30	1.95	1.11	1.63	1.37	1.40	2.81	2.81	2.67	5.58	4.73	5.93	5.90	Diurnal Maximum
Z - zerospan C - Calibration																																																
Alberta Ambient Air Quality Objectives (AAAQO): 1-hr 10 ppb 24-hr 3 ppb																																																



WCAS - Hinton
Summary of Hourly Averages

Sulphur Dioxide (SO₂) - ppb
April 2015

Maximum Value: 6.48 ppb on Apr 27 16:00 Maximum Daily Average: 1.77 ppb on Apr 27																				Hours in Service: 720 Hours of Data: 682 Hours of Missing Data: 38 Hours of Calibration: 38 Percent Operational Time: 100.0							
Minimum Value: 0.0 ppb on Apr 1 01:00 Minimum Daily Average: 0.00 ppb on Apr 25 Maximum Diurnal Average: 0.80 ppb at hour 10 Minimum Diurnal Average: 0.02 ppb at hour 5 Monthly Average: 0.375 ppb Percentiles: P ₁ = 0.0 P ₁₀ = 0.0 Q ₁ = 0.0 Median = 0.0 Q ₃ = 0.2 P ₉₀ = 1.2 P ₉₉ = 4.2																											
Day	Hourly Period Ending At																								Daily Average	Daily Maximum	
	1	2	3	4	5	6	7	8	9	10	11	12	13	14	15	16	17	18	19	20	21	22	23	24			
1-Apr	0.0	0.0	0.0	Z	0.0	0.0	0.0	0.0	0.0	0.0	0.0	0.0	0.0	0.0	0.0	0.0	0.0	0.0	0.0	0.0	0.0	0.0	0.0	0.0	0.0	0.00	0.00
2-Apr	0.0	0.0	0.0	Z	0.0	0.0	0.0	0.0	0.0	0.1	0.1	0.0	0.0	0.1	0.1	0.0	0.0	0.0	0.0	0.0	0.0	0.0	0.0	0.0	0.1	0.02	0.11
3-Apr	0.0	0.1	0.1	Z	0.0	0.0	0.1	0.0	0.0	0.1	0.7	0.6	0.6	0.9	1.6	0.4	0.3	0.1	0.0	0.0	0.0	0.0	0.0	0.0	0.24	1.60	
4-Apr	0.0	0.0	0.1	Z	0.0	0.1	0.0	0.0	0.0	0.1	0.1	0.1	0.2	0.2	0.3	0.1	0.1	0.1	0.1	0.1	0.1	0.0	0.1	0.0	0.08	0.26	
5-Apr	0.1	0.0	0.0	Z	0.0	0.0	0.0	0.0	0.0	0.0	0.0	0.0	0.0	0.0	0.0	0.0	0.0	0.0	0.0	0.0	0.0	0.0	0.0	0.0	0.01	0.05	
6-Apr	0.0	0.0	0.0	Z	0.0	0.0	0.0	0.0	0.0	0.2	0.0	0.0	0.0	0.0	0.0	0.0	0.1	0.1	0.0	0.0	0.0	0.0	0.0	0.0	0.02	0.18	
7-Apr	0.0	0.0	0.0	Z	0.0	0.0	0.0	0.0	0.0	0.9	0.9	0.1	2.8	2.9	1.7	1.0	0.8	0.0	0.0	0.0	0.0	0.0	0.0	0.0	0.49	2.90	
8-Apr	0.0	0.0	0.0	Z	0.0	0.0	0.0	0.0	0.6	1.0	0.0	0.0	0.3	0.1	0.3	0.0	0.0	1.1	0.4	0.0	0.0	0.0	0.0	0.0	0.17	1.07	
9-Apr	0.0	0.0	0.0	Z	0.0	0.0	0.0	0.0	0.2	0.0	0.0	0.5	0.1	0.2	0.4	0.2	0.2	2.0	2.5	1.3	0.0	0.1	0.0	0.0	0.34	2.46	
10-Apr	0.0	0.0	0.0	Z	0.0	0.0	0.1	0.1	0.0	1.1	1.4	0.4	0.8	0.2	0.8	1.0	1.2	2.4	2.3	3.0	1.3	0.0	0.0	0.0	0.69	2.98	
11-Apr	0.0	0.0	0.0	Z	0.0	0.0	0.0	0.0	0.2	0.0	0.0	0.0	0.0	0.0	0.0	0.7	0.0	0.2	0.6	0.0	0.0	0.0	0.0	0.0	0.08	0.67	
12-Apr	0.0	0.0	0.3	Z	0.1	0.0	0.0	0.5	1.3	1.6	1.1	0.9	0.9	0.0	0.0	0.0	0.5	0.0	0.6	0.0	0.0	0.0	0.0	0.0	0.34	1.60	
13-Apr	0.0	0.0	0.0	Z	0.0	0.0	0.0	0.0	0.0	0.3	1.5	0.3	0.4	0.1	0.0	0.0	0.0	0.0	0.0	0.0	0.0	0.0	0.0	0.0	0.12	1.53	
14-Apr	0.0	0.0	0.0	Z	0.0	0.0	0.0	0.0	0.0	0.2	0.8	0.1	0.1	0.2	0.1	0.2	0.2	0.1	0.2	0.1	0.1	0.1	0.2	0.2	0.13	0.80	
15-Apr	0.2	0.2	0.3	Z	0.2	0.2	0.1	C	C	C	C	C	C	C	C	0.7	0.4	0.6	0.0	0.0	1.0	3.4	1.6	0.5	--	3.37	
16-Apr	0.2	0.3	0.5	Z	0.0	0.0	0.1	0.1	3.2	2.7	2.7	0.6	0.8	1.5	1.6	1.5	0.3	0.7	0.5	0.0	0.0	0.0	0.0	0.0	0.77	3.21	
17-Apr	0.1	0.0	0.1	Z	0.1	0.1	0.1	0.1	0.1	0.1	0.1	0.4	0.8	1.0	0.6	0.0	0.4	1.7	0.1	0.2	0.5	0.2	0.2	0.1	0.1	0.30	1.71
18-Apr	0.1	0.1	0.1	Z	0.0	0.1	0.1	0.1	0.1	0.0	0.1	0.1	0.1	0.0	0.0	0.4	0.2	0.1	0.0	0.1	0.0	0.0	0.1	0.0	0.08	0.36	
19-Apr	0.0	0.0	0.0	Z	0.0	0.0	0.0	0.0	0.1	1.6	1.7	0.8	0.9	0.1	0.2	0.4	4.1	2.2	0.4	0.1	0.0	0.0	0.0	0.0	0.55	4.05	
20-Apr	0.0	0.0	0.0	Z	0.0	0.0	0.0	0.0	2.5	2.1	0.0	0.0	0.7	1.2	0.8	0.8	0.5	0.0	0.1	0.2	0.1	0.1	0.1	0.1	0.40	2.51	
21-Apr	0.0	0.1	0.0	Z	0.0	0.0	0.1	0.2	0.5	1.2	2.1	5.2	0.8	2.1	0.8	0.0	0.0	0.0	0.1	0.0	0.0	0.0	0.0	0.0	0.57	5.20	
22-Apr	0.0	0.0	0.0	Z	0.0	0.0	0.0	0.0	0.2	0.5	0.1	0.4	0.1	0.0	0.0	0.0	0.0	0.0	0.0	0.0	0.0	0.0	0.0	0.0	0.06	0.53	
23-Apr	0.0	0.0	0.0	Z	0.0	0.0	0.0	0.0	1.2	1.7	1.5	2.0	0.5	0.0	0.9	0.0	0.0	0.0	0.0	0.0	0.0	0.0	0.0	0.0	0.34	1.97	
24-Apr	0.0	0.0	0.0	Z	0.0	0.0	0.0	0.0	0.0	0.0	0.0	0.0	0.2	0.2	0.1	0.0	0.0	0.0	0.0	0.0	0.0	0.0	0.0	0.0	0.02	0.19	
25-Apr	0.0	0.0	0.0	Z	0.0	0.0	0.0	0.0	0.0	0.0	0.0	0.0	0.0	0.0	0.0	0.0	0.0	0.0	0.0	0.0	0.0	0.0	0.0	0.0	0.00	0.00	
26-Apr	0.0	0.0	0.0	Z	0.0	0.0	0.0	0.0	1.2	3.3	0.5	0.7	0.4	0.3	3.7	2.0	1.0	4.6	4.0	2.5	0.1	0.1	0.0	0.1	1.06	4.59	
27-Apr	0.1	0.2	0.2	Z	0.1	0.1	0.3	0.3	0.3	0.7	0.4	1.7	3.9	5.8	5.6	6.5	4.1	2.6	0.5	1.8	4.1	1.0	0.0	0.4	1.77	6.48	
28-Apr	0.8	0.1	0.0	Z	0.0	0.0	0.0	0.0	0.0	0.0	1.2	2.3	2.5	2.3	3.2	3.3	3.6	2.5	1.6	0.0	0.0	0.0	0.0	0.0	1.02	3.63	
29-Apr	0.0	0.0	0.0	Z	0.0	0.0	0.0	0.0	0.0	0.0	0.0	0.0	0.0	0.0	0.1	0.0	1.6	0.4	0.0	0.0	0.0	0.0	0.0	0.0	0.10	1.57	
30-Apr	0.3	0.0	0.6	Z	0.1	0.0	0.1	0.0	0.9	3.7	4.3	5.2	2.5	0.4	0.8	0.0	0.4	0.0	0.0	0.5	2.0	0.3	0.0	0.0	0.97	5.18	
																								Diurnal Average			
																								Diurnal Maximum			
																								0.06 0.04 0.07 -- 0.02 0.02 0.04 0.05 0.44 0.80 0.75 0.78 0.71 0.67 0.80 0.63 0.73 0.65 0.46 0.35 0.30 0.18 0.07 0.05			
																								0.81 0.33 0.58 -- 0.17 0.24 0.27 0.50 3.21 3.74 4.33 5.20 3.91 5.77 5.56 6.48 4.13 4.59 4.03 2.98 4.06 3.37 1.65 0.52			
Z - zerospan C - Calibration																											
Alberta Ambient Air Quality Objectives (AAQO): 1-hr 172 ppb 24-hr 48 ppb																											



WCAS - Hinton
Summary of Hourly Averages

Ozone (O₃) - ppb
April 2015

Maximum Value: 60.58 ppb on Apr 30 18:00		Maximum Daily Average: 43.92 ppb on Apr 12		Hours in Service: 720																																													
Minimum Value: 1.7 ppb on Apr 22 06:00		Minimum Daily Average: 21.65 ppb on Apr 24		Hours of Data: 682																																													
Maximum Diurnal Average: 48.39 ppb at hour 18		Minimum Diurnal Average: 14.72 ppb at hour 5		Hours of Missing Data: 38																																													
Monthly Average: 33.958 ppb		Percentiles: P ₁ = 2.9 P ₁₀ = 8.3 Q ₁ = 20.1 Median = 37.7 Q ₃ = 48.2 P ₉₀ = 53.4 P ₉₉ = 58.7		Hours of Calibration: 38																																													
				Percent Operational Time: 100.0																																													
Day	Hourly Period Ending At																								Daily Average	Daily Maximum																							
	1	2	3	4	5	6	7	8	9	10	11	12	13	14	15	16	17	18	19	20	21	22	23	24																									
1-Apr	44.1	45.3	46.5	Z	45.8	46.0	46.1	46.5	49.5	51.2	51.6	51.6	51.3	50.8	47.5	43.0	39.0	40.6	39.3	29.2	26.0	23.4	20.4	12.7	41.18	51.58																							
2-Apr	5.9	7.5	6.3	Z	6.6	10.4	6.4	18.7	23.2	37.2	44.4	46.2	46.1	45.9	44.8	46.1	47.5	47.0	46.4	39.8	26.1	11.9	4.1	3.3	27.03	47.52																							
3-Apr	3.5	2.3	4.2	Z	3.3	1.9	1.8	4.3	13.9	32.1	47.4	55.0	56.5	57.2	57.3	56.4	55.2	54.3	54.5	46.2	49.3	51.5	45.7	43.6	34.67	57.26																							
4-Apr	39.8	37.2	35.3	Z	32.5	28.1	29.7	24.0	21.9	21.8	23.2	23.9	24.6	27.4	28.7	32.4	36.4	37.3	37.0	33.1	30.5	30.0	31.0	30.4	30.27	39.76																							
5-Apr	30.2	31.8	32.1	Z	27.4	27.3	25.7	25.5	25.0	26.4	27.9	29.9	31.9	34.1	36.3	40.0	41.9	44.3	43.1	40.6	39.8	38.9	37.8	35.8	33.63	44.27																							
6-Apr	32.9	30.6	28.4	Z	26.1	24.5	20.9	32.3	36.9	39.2	37.3	33.8	36.3	39.3	43.2	46.3	45.5	47.4	44.9	38.5	39.6	37.6	19.0	13.4	34.52	47.42																							
7-Apr	11.3	6.4	7.9	Z	6.3	7.4	9.9	16.1	33.3	38.0	49.4	53.9	53.9	54.4	54.9	56.3	58.8	58.1	53.9	48.8	27.8	30.9	17.0	9.0	33.21	58.84																							
8-Apr	9.4	5.2	4.5	Z	12.7	18.2	14.2	16.7	35.9	45.1	51.9	54.6	54.0	54.8	54.1	55.7	55.8	54.8	54.6	47.5	34.5	24.8	33.3	21.3	35.38	55.82																							
9-Apr	6.7	5.8	6.0	Z	18.6	24.6	27.4	33.2	42.9	47.7	51.7	54.5	59.2	59.7	58.8	59.1	57.8	55.3	49.5	50.3	52.3	43.0	39.3	22.3	40.26	59.66																							
10-Apr	16.4	12.7	11.1	Z	3.2	3.0	2.9	7.7	22.6	42.7	48.0	51.9	54.1	57.2	56.3	53.6	54.1	48.4	46.5	47.3	47.7	48.7	48.0	45.3	36.08	57.21																							
11-Apr	41.3	20.8	21.4	Z	16.8	12.1	12.2	15.5	40.9	52.4	50.7	51.6	51.7	53.6	53.8	53.5	51.2	51.4	47.3	45.1	43.1	43.5	44.3	41.4	39.80	53.77																							
12-Apr	44.4	43.7	40.8	Z	44.6	44.0	37.8	42.4	45.1	43.7	46.6	46.8	47.9	49.9	50.7	50.0	48.7	51.2	47.4	45.8	42.1	39.1	31.3	26.0	43.92	51.24																							
13-Apr	19.6	14.5	7.0	Z	6.3	6.4	6.7	14.1	23.3	31.3	41.6	50.8	51.5	53.5	56.2	56.3	56.8	58.7	57.1	50.3	38.1	18.7	20.2	16.1	32.82	58.72																							
14-Apr	16.3	11.9	11.5	Z	7.2	34.3	46.6	45.7	41.7	43.6	43.7	45.0	46.3	48.3	48.2	50.2	52.5	53.0	52.4	50.7	45.0	34.9	27.3	16.2	37.94	53.04																							
15-Apr	12.7	10.7	6.5	Z	4.4	2.3	4.8	C	C	C	C	C	C	C	C	52.2	51.7	50.2	49.3	48.5	45.7	37.0	36.8	37.7	--	52.19																							
16-Apr	43.8	40.5	42.9	Z	25.7	12.4	6.8	27.0	40.7	43.2	46.0	47.7	47.3	44.9	44.9	45.0	46.6	43.5	42.2	40.6	38.4	39.2	25.4	20.1	37.16	47.72																							
17-Apr	23.4	21.4	16.0	Z	9.6	3.5	4.2	10.5	18.7	25.0	29.5	42.0	45.1	46.7	48.8	50.8	52.9	56.7	54.7	52.1	50.5	51.8	51.6	49.2	35.42	56.69																							
18-Apr	28.6	21.7	19.9	Z	16.0	11.2	17.4	18.5	35.0	51.6	52.1	52.5	54.4	55.3	54.6	52.6	53.7	52.4	53.2	49.0	43.1	37.3	34.6	32.1	38.99	55.32																							
19-Apr	23.3	19.9	21.2	Z	10.6	13.7	15.3	22.5	33.3	44.4	48.2	51.4	51.4	52.5	52.6	53.1	52.4	54.2	55.0	52.7	48.9	24.4	21.7	23.9	36.82	54.99																							
20-Apr	21.8	22.1	19.1	Z	10.7	10.0	6.7	11.7	34.6	39.2	43.0	43.6	42.9	42.0	39.8	39.2	40.4	38.6	27.5	18.2	9.9	12.7	12.3	5.5	25.71	43.60																							
21-Apr	6.4	4.5	7.4	Z	5.3	4.9	5.2	8.5	24.1	33.7	38.0	41.0	45.0	44.7	44.1	43.1	41.9	41.6	42.2	37.6	24.5	10.1	9.2	8.0	24.83	44.99																							
22-Apr	8.2	4.7	5.4	Z	1.9	1.7	3.1	7.1	19.4	29.4	35.4	37.1	34.6	26.5	25.8	32.2	28.0	29.6	32.7	36.4	40.0	31.3	32.7	18.8	22.69	40.00																							
23-Apr	7.1	3.8	3.9	Z	16.7	20.4	37.2	45.0	49.6	52.6	52.9	52.3	53.5	54.7	54.8	50.1	53.2	53.1	45.5	39.4	32.7	33.5	31.4	25.9	37.79	54.83																							
24-Apr	27.7	24.4	22.8	Z	20.0	21.3	18.6	16.9	18.1	18.2	22.2	26.0	24.6	22.5	25.5	29.3	27.9	26.9	23.0	15.6	12.5	20.1	17.0	16.8	21.65	29.34																							
25-Apr	16.5	17.3	17.2	Z	10.9	12.8	12.0	12.7	15.6	27.0	28.8	23.4	30.9	27.8	29.4	37.0	39.9	38.5	34.6	29.5	25.8	25.3	26.0	19.1	24.25	39.94																							
26-Apr	11.8	8.3	7.4	Z	3.6	4.1	5.2	8.6	18.8	29.8	32.6	41.6	46.6	50.2	52.6	52.4	53.7	54.6	51.5	49.5	42.8	31.3	18.4	12.6	29.92	54.57																							
27-Apr	13.3	12.7	12.2	Z	7.5	7.9	9.4	26.5	10.7	39.1	52.8	56.6	55.7	56.1	55.8	52.8	52.5	50.8	51.6	48.4	42.3	39.1	42.1	44.0	36.52	56.61																							
28-Apr	39.6	31.9	23.5	Z	10.8	10.2	5.1	5.5	7.5	15.9	27.8	43.6	52.0	52.2	51.6	51.7	50.4	51.8	52.7	49.1	46.5	50.2	52.9	55.0	36.41	54.99																							
29-Apr	42.2	45.2	29.5	Z	18.5	29.7	33.5	38.8	41.8	26.6	27.8	40.8	43.6	46.2	44.3	45.6	45.1	46.9	45.1	42.1	40.8	27.1	16.4	8.5	35.93	46.90																							
30-Apr	41.4	42.4	43.0	Z	12.1	5.1	9.3	14.3	35.6	50.4	48.3	51.7	52.7	54.2	55.2	57.4	58.1	60.6	58.7	55.5	49.9	50.2	41.8	30.6	42.55	60.58																							
																								23.00	20.25	18.69	--	14.72	15.32	16.08	21.26	29.63	37.19	41.41	44.85	46.41	46.99	47.26	48.11	48.33	48.39	46.44	42.58	37.88	33.25	29.64	24.81	Diurnal Average	
																								44.44	45.30	46.48	--	45.79	45.96	46.60	46.49	49.55	52.64	52.90	56.61	59.20	59.66	58.80	59.07	58.84	60.58	58.72	55.48	52.29	51.76	52.86	54.99	Diurnal Maximum	
Z - zerospan C - Calibration																																																	
Alberta Ambient Air Quality Objectives (AAAQO): 1-hr 82.5 ppb 24-hr -- ppb																																																	



WCAS - Hinton
Summary of Hourly Averages

Nitrogen Oxide (NO) - ppb
April 2015

Maximum Value: 34.42 ppb on Apr 16 07:00		Maximum Daily Average: 5.49 ppb on Apr 10		Hours in Service: 720																													
Minimum Value: 0.0 ppb on Apr 1 01:00		Minimum Daily Average: 0.48 ppb on Apr 12		Hours of Data: 682																													
Maximum Diurnal Average: 6.41 ppb at hour 7		Minimum Diurnal Average: 0.46 ppb at hour 19		Hours of Missing Data: 38																													
Monthly Average: 1.808 ppb		Percentiles: P ₁ = 0.0 P ₁₀ = 0.1 Q ₁ = 0.2 Median = 0.8 Q ₃ = 1.7 P ₉₀ = 4.2 P ₉₉ = 18.1		Hours of Calibration: 38																													
				Percent Operational Time: 100.0																													
Day	Hourly Period Ending At																								Daily Average	Daily Maximum							
	1	2	3	4	5	6	7	8	9	10	11	12	13	14	15	16	17	18	19	20	21	22	23	24									
1-Apr	0.0	0.0	0.1	Z	0.0	0.0	0.0	0.0	0.0	0.0	0.0	0.0	0.0	0.6	3.4	5.3	1.6	0.7	0.3	0.1	0.0	0.8	0.5	0.59	5.30								
2-Apr	1.0	0.5	0.9	Z	2.2	3.6	6.9	1.3	1.6	1.8	2.0	1.1	0.7	0.5	1.3	1.7	0.7	1.4	0.0	1.6	0.7	2.9	7.9	16.7	2.56	16.65							
3-Apr	5.8	5.4	2.0	Z	2.0	5.2	16.8	13.9	10.4	4.4	2.2	0.7	0.4	0.4	0.4	0.2	0.2	0.2	0.1	0.2	0.2	1.0	0.2	0.3	3.15	16.77							
4-Apr	0.1	0.1	1.2	Z	1.5	1.6	1.3	1.2	0.7	2.4	1.5	1.5	2.2	1.2	0.9	1.0	0.8	0.4	0.6	1.1	0.8	0.2	0.1	0.3	1.00	2.35							
5-Apr	0.1	0.1	0.4	Z	1.0	0.4	0.7	1.0	1.2	1.9	1.7	1.0	1.0	0.7	0.6	0.7	0.7	0.7	0.3	0.9	0.2	0.1	0.2	0.4	0.69	1.93							
6-Apr	0.5	0.3	0.3	Z	1.7	1.4	1.6	3.1	1.8	0.9	1.0	2.1	1.4	1.6	0.8	0.8	0.6	1.0	1.0	2.0	1.2	0.9	4.6	2.6	1.44	4.60							
7-Apr	1.0	1.1	1.1	Z	8.6	1.4	1.0	2.9	1.2	3.1	1.7	1.0	1.3	1.1	0.8	0.3	0.2	0.0	0.0	0.0	2.4	0.5	0.8	3.8	1.54	8.60							
8-Apr	1.4	4.4	6.1	Z	1.4	0.3	5.6	3.5	1.7	1.9	1.6	1.2	1.2	0.8	1.3	0.8	0.6	0.3	0.2	0.1	0.1	0.7	0.0	1.5	1.59	6.13							
9-Apr	1.0	1.2	1.6	Z	4.2	0.2	0.3	1.1	1.4	0.9	0.8	1.1	0.7	0.7	0.6	0.6	0.5	0.9	0.8	0.2	0.0	0.0	0.1	1.0	0.88	4.20							
10-Apr	3.5	1.3	1.8	Z	18.9	16.4	27.9	24.8	14.7	4.4	3.8	0.7	1.1	0.7	0.5	0.8	0.7	1.1	0.9	0.4	0.4	0.6	0.6	0.5	5.49	27.91							
11-Apr	0.1	0.1	0.4	Z	2.7	4.6	3.6	8.5	4.2	0.5	0.5	0.8	1.4	0.0	0.0	0.0	0.8	0.2	0.4	0.2	0.0	0.0	0.0	0.1	1.27	8.55							
12-Apr	0.0	0.0	0.2	Z	0.0	0.1	0.4	1.2	1.8	2.8	1.2	1.0	1.0	0.0	0.0	0.0	0.5	0.0	0.2	0.0	0.0	0.0	0.2	0.5	0.48	2.82							
13-Apr	0.1	0.6	1.5	Z	5.9	7.0	10.0	7.3	4.8	3.1	2.5	0.5	1.1	0.6	1.1	0.7	4.8	0.4	0.5	0.0	0.3	0.7	0.9	1.5	2.43	9.99							
14-Apr	1.9	0.5	0.4	Z	2.5	1.9	1.1	1.0	1.3	1.1	1.2	0.6	0.8	0.6	0.7	0.3	0.1	0.0	0.0	0.0	0.5	0.8	1.3	0.81	2.50								
15-Apr	0.5	0.8	3.6	Z	5.9	17.7	16.4	C	C	C	C	C	C	C	1.5	1.3	1.0	0.6	0.5	0.4	0.6	0.5	0.3	--	17.74								
16-Apr	0.2	0.2	0.1	Z	2.8	11.2	34.4	16.3	2.8	2.1	1.9	1.0	0.8	1.0	1.1	0.7	0.2	0.4	0.2	0.0	0.4	0.1	1.2	1.5	3.52	34.42							
17-Apr	1.4	0.1	1.9	Z	3.6	4.2	10.5	7.2	2.1	2.5	3.4	1.1	1.0	0.3	0.1	0.5	1.2	0.1	0.1	0.3	0.0	0.0	0.0	0.0	1.81	10.51							
18-Apr	2.5	0.8	0.5	Z	0.2	1.5	1.0	5.2	8.8	0.0	0.1	0.1	0.2	0.1	0.1	0.6	0.4	0.0	0.0	0.1	0.1	0.1	0.4	0.3	1.01	8.80							
19-Apr	0.2	0.1	0.3	Z	2.1	0.4	0.5	1.0	1.9	2.4	1.8	1.0	1.3	0.6	0.5	0.8	1.2	0.4	0.1	0.1	0.0	0.5	0.2	0.1	0.76	2.39							
20-Apr	0.2	0.0	0.1	Z	0.9	1.3	3.8	7.0	2.1	2.1	1.4	1.6	1.6	0.7	1.3	0.7	0.3	0.0	1.9	3.5	6.5	2.6	1.9	1.4	1.87	7.00							
21-Apr	0.6	0.7	0.1	Z	0.1	0.4	3.7	18.3	4.0	2.5	1.8	2.3	1.1	1.0	1.4	1.8	2.3	1.4	0.8	0.8	5.2	7.3	0.7	0.6	2.56	18.27							
22-Apr	0.4	2.1	0.4	Z	7.9	7.4	14.2	7.0	4.9	2.6	1.2	0.5	0.4	2.0	1.9	1.0	0.2	0.4	0.8	0.1	0.2	0.1	0.3	0.1	2.44	14.16							
23-Apr	1.4	1.5	1.2	Z	3.7	1.6	0.0	0.1	0.4	0.9	1.1	0.8	0.2	0.1	0.4	0.4	0.3	0.2	0.3	0.7	0.4	0.3	0.3	0.1	0.70	3.67							
24-Apr	0.7	0.1	0.2	Z	1.1	0.8	1.0	1.7	1.5	1.2	0.8	1.6	2.0	2.3	2.0	1.0	1.6	1.6	1.1	1.4	0.5	0.2	0.2	0.2	1.08	2.28							
25-Apr	0.6	0.3	0.1	Z	2.1	3.4	3.5	3.6	1.9	2.2	1.4	2.0	1.7	1.8	1.1	0.9	0.5	1.2	1.0	0.3	0.2	0.1	0.2	0.5	1.34	3.64							
26-Apr	0.2	1.4	2.0	Z	5.7	5.5	4.8	5.8	5.8	3.3	1.4	0.7	0.9	0.4	0.8	0.8	0.7	0.9	0.5	0.2	0.9	0.8	0.5	0.5	1.93	5.84							
27-Apr	0.4	0.5	0.2	Z	3.6	3.2	3.7	21.3	24.3	3.4	0.8	1.1	1.6	1.7	1.2	1.2	0.8	0.6	0.3	0.2	0.1	0.1	0.2	0.1	3.08	24.32							
28-Apr	0.1	0.2	0.1	Z	5.5	4.1	9.0	11.1	11.8	7.3	4.3	1.9	1.1	0.8	1.2	1.2	1.4	0.8	0.3	0.1	0.1	0.1	0.1	0.0	2.71	11.82							
29-Apr	0.0	0.5	0.1	Z	0.4	0.1	0.1	0.2	0.9	1.7	2.5	2.2	0.9	0.3	1.5	0.5	1.1	0.4	0.0	0.3	0.1	0.1	0.2	0.8	0.66	2.50							
30-Apr	0.1	0.1	0.3	Z	5.1	11.7	8.2	7.3	3.3	2.0	2.2	2.1	1.0	0.2	0.4	0.1	0.1	0.2	0.2	0.1	0.2	0.1	0.1	0.4	1.98	11.67							
		0.86	0.83	0.97	--	3.45	3.95	6.41	6.34	4.26	2.26	1.64	1.16	1.04	0.77	0.85	0.83	1.01	0.59	0.46	0.52	0.72	0.71	0.81	1.26	Diurnal Average							
		5.79	5.36	6.13	--	18.93	17.74	34.42	24.79	24.32	7.27	4.27	2.31	2.22	2.28	2.02	3.39	5.30	1.63	1.88	3.50	6.55	7.33	7.92	16.65	Diurnal Maximum							
Z - zerospan		C - Calibration																															
Alberta Ambient Air Quality Objectives (AAQO):		1-hr --- ppb				24-hr --- ppb																											



WCAS - Hinton
Summary of Hourly Averages

Nitrogen Dioxide (NO₂) - ppb
April 2015

Maximum Value: 33.14 ppb on Apr 16 07:00		Maximum Daily Average: 10.26 ppb on Apr 10		Hours in Service: 720																																													
Minimum Value: 0.2 ppb on Apr 1 13:00		Minimum Daily Average: 2.31 ppb on Apr 1		Hours of Data: 682																																													
Maximum Diurnal Average: 9.82 ppb at hour 5		Minimum Diurnal Average: 2.12 ppb at hour 14		Hours of Missing Data: 38																																													
Monthly Average: 5.694 ppb		Percentiles: P ₁ = 0.3 P ₁₀ = 1.3 Q ₁ = 2.3 Median = 3.7 Q ₃ = 7.5 P ₉₀ = 13.6 P ₉₉ = 20.9		Hours of Calibration: 38																																													
				Percent Operational Time: 100.0																																													
Day	Hourly Period Ending At																								Daily Average	Daily Maximum																							
	1	2	3	4	5	6	7	8	9	10	11	12	13	14	15	16	17	18	19	20	21	22	23	24																									
1-Apr	0.6	2.0	0.5	Z	0.3	0.4	0.3	0.3	0.4	0.6	0.3	0.3	0.2	0.2	1.5	4.9	6.8	3.1	2.9	4.5	3.4	2.0	8.1	9.5	2.31	9.51																							
2-Apr	12.5	10.2	9.4	Z	13.1	8.9	18.1	6.0	5.3	4.6	3.7	2.7	2.4	2.1	4.0	3.2	2.3	3.0	1.1	4.3	13.1	17.9	20.2	20.4	8.20	20.37																							
3-Apr	17.5	15.9	11.5	Z	10.3	10.3	10.3	8.6	8.9	8.1	5.2	2.2	1.6	1.5	1.8	1.6	1.5	1.7	1.3	3.9	3.2	2.0	3.1	3.3	5.89	17.49																							
4-Apr	2.6	3.6	5.1	Z	4.9	6.8	5.0	5.5	3.8	3.8	3.4	3.4	3.8	3.5	3.5	3.4	3.0	2.7	3.2	4.8	4.3	3.5	3.0	3.4	3.91	6.77																							
5-Apr	2.7	2.2	2.6	Z	4.4	3.4	3.9	3.6	4.3	4.1	3.6	3.1	2.9	2.4	1.9	2.2	2.6	3.0	2.3	4.0	2.3	2.4	3.1	3.3	3.06	4.39																							
6-Apr	6.7	7.6	7.0	Z	9.6	9.7	11.4	7.3	4.3	2.7	3.1	3.9	3.2	2.8	1.7	1.5	2.2	2.3	3.9	8.6	5.8	6.0	17.9	17.7	6.39	17.87																							
7-Apr	16.0	17.6	15.2	Z	15.6	12.4	8.4	6.5	3.6	6.9	3.5	2.2	2.9	3.0	2.2	2.7	1.1	0.5	0.8	2.1	19.4	11.6	20.5	23.9	8.64	23.88																							
8-Apr	23.6	22.5	25.6	Z	15.2	10.0	11.5	9.5	5.2	5.9	3.4	2.2	2.7	2.1	3.4	2.5	2.4	2.6	3.5	6.2	17.0	16.6	2.0	5.8	8.76	25.56																							
9-Apr	17.1	16.2	19.9	Z	14.1	7.1	8.0	5.9	5.1	3.1	2.2	3.0	2.0	2.3	2.1	2.1	2.6	5.5	9.2	6.7	2.8	5.5	5.3	14.9	7.07	19.87																							
10-Apr	15.3	17.3	16.3	Z	21.1	19.3	19.7	18.8	16.0	11.8	10.9	2.5	3.3	2.1	2.0	3.2	4.0	9.2	9.4	9.7	8.1	5.4	5.3	5.1	10.26	21.08																							
11-Apr	4.4	6.4	4.0	Z	9.9	10.7	9.4	10.3	6.6	1.9	2.3	2.7	3.0	0.4	0.4	0.4	2.7	1.1	3.4	2.9	2.1	2.6	1.7	6.5	4.17	10.71																							
12-Apr	2.3	1.1	5.2	Z	3.7	2.8	6.1	5.9	4.9	6.3	2.9	2.7	2.7	0.7	0.5	0.6	2.2	0.3	2.5	1.0	1.5	5.5	9.1	13.8	3.66	13.78																							
13-Apr	13.3	14.2	21.2	Z	18.6	16.3	16.5	11.7	8.8	9.8	7.5	2.1	2.5	1.8	1.7	2.0	3.0	2.1	2.5	2.6	11.7	17.1	15.0	18.0	9.56	21.25																							
14-Apr	13.2	13.1	16.1	Z	14.5	8.3	2.7	2.5	5.8	3.6	4.0	2.8	2.8	2.1	2.6	1.5	0.8	0.4	0.3	0.4	0.6	10.0	11.0	16.2	5.88	16.17																							
15-Apr	16.3	18.1	19.0	Z	17.3	19.9	17.6	C	C	C	C	C	C	C	C	2.2	2.6	2.7	2.5	2.5	4.6	12.2	11.8	9.4	--	19.87																							
16-Apr	3.9	8.4	4.7	Z	11.8	16.5	33.1	16.3	9.4	6.0	5.0	2.4	2.2	3.3	4.0	4.0	1.8	4.1	3.3	1.4	3.0	2.1	11.3	12.6	7.42	33.14																							
17-Apr	9.0	6.4	7.5	Z	11.9	16.1	13.2	10.5	5.6	7.3	6.3	2.8	2.6	1.0	0.6	1.7	4.3	0.7	1.6	4.8	1.9	0.3	0.3	2.2	5.15	16.10																							
18-Apr	13.1	15.4	14.3	Z	11.5	16.5	8.7	10.3	10.4	0.4	0.3	0.6	0.3	0.5	0.5	1.5	1.3	0.7	0.8	2.6	3.0	4.8	5.1	4.6	5.53	16.53																							
19-Apr	8.0	8.2	4.0	Z	11.8	10.0	6.2	4.8	5.2	5.5	4.2	2.3	2.7	1.5	1.6	2.3	3.9	2.6	1.9	2.8	3.3	17.6	12.0	6.0	5.58	17.61																							
20-Apr	3.7	2.0	3.0	Z	7.8	6.9	11.1	10.1	5.0	5.8	3.0	2.8	2.6	2.4	3.5	2.6	1.5	0.8	10.7	15.2	17.8	12.4	12.2	13.3	6.80	17.84																							
21-Apr	11.3	11.3	4.0	Z	3.0	3.3	4.4	14.2	6.6	5.9	4.3	5.1	1.7	1.8	2.3	1.9	2.8	3.1	3.6	6.6	11.8	14.5	10.2	6.6	6.11	14.54																							
22-Apr	5.3	7.0	5.9	Z	8.9	10.2	10.5	9.5	8.6	6.5	3.5	3.2	6.2	6.0	5.7	2.0	0.6	0.8	1.0	0.8	2.1	3.2	2.0	4.4	4.96	10.52																							
23-Apr	9.3	7.6	6.0	Z	6.6	5.1	0.9	0.9	1.5	2.0	2.7	2.2	0.9	0.7	1.3	1.3	1.0	1.1	1.4	4.2	4.0	2.5	2.3	1.7	2.92	9.29																							
24-Apr	2.5	1.7	1.9	Z	2.8	2.7	3.7	4.8	4.0	3.7	2.5	2.9	3.6	4.1	2.9	2.3	3.5	4.3	5.0	6.8	6.2	2.1	1.6	1.7	3.36	6.84																							
25-Apr	2.4	2.1	2.2	Z	7.2	6.2	5.4	4.8	3.8	2.9	2.7	4.0	2.4	2.7	2.6	2.1	1.8	2.6	3.1	2.5	2.2	2.1	2.7	3.9	3.23	7.24																							
26-Apr	4.5	7.1	4.7	Z	4.9	5.4	3.5	2.9	4.6	3.9	2.3	1.6	2.1	1.1	2.4	2.5	2.1	3.7	2.9	4.4	7.0	8.3	8.1	7.5	4.23	8.26																							
27-Apr	4.7	4.0	3.6	Z	5.7	5.6	7.2	16.0	26.4	9.6	3.1	2.6	3.7	4.9	4.4	6.1	4.0	3.5	1.8	3.1	3.9	5.0	2.9	1.4	5.79	26.39																							
28-Apr	3.4	3.5	5.2	Z	8.3	8.0	10.0	9.5	9.2	5.9	5.3	3.7	3.4	2.6	3.8	3.9	4.0	2.5	2.5	0.5	0.7	0.4	0.6	0.6	4.25	10.02																							
29-Apr	1.3	3.6	3.4	Z	3.9	2.6	1.4	5.5	5.5	13.5	11.0	5.6	3.5	1.3	2.9	1.4	3.1	1.3	0.3	3.7	3.4	3.5	5.9	5.2	4.03	13.47																							
30-Apr	2.5	1.7	2.3	Z	15.7	18.6	8.8	8.7	4.6	4.7	5.8	5.0	2.4	0.7	1.5	0.4	1.1	1.7	2.3	2.9	6.6	3.3	2.7	7.2	4.83	18.57																							
																								8.30	8.59	8.37	--	9.82	9.33	9.24	7.97	6.67	5.41	4.07	2.85	2.63	2.12	2.40	2.35	2.55	2.46	3.04	4.22	5.90	6.75	7.24	8.33	Diurnal Average	
																								23.63	22.47	25.56	--	21.08	19.87	33.14	18.83	26.39	13.47	11.02	5.57	6.23	6.02	5.67	6.08	6.83	9.19	10.71	15.17	19.39	17.94	20.49	23.88	Diurnal Maximum	
Z - zerospan C - Calibration																																																	
Alberta Ambient Air Quality Objectives (AAQO): 1-hr 159 ppb 24-hr 106 ppb																																																	



WCAS - Hinton
Summary of Hourly Averages

NOx (NO_x) - ppb
April 2015

Maximum Value: 67.55 ppb on Apr 16 07:00		Maximum Daily Average: 15.77 ppb on Apr 10		Hours in Service: 720																																													
Minimum Value: 0.1 ppb on Apr 1 13:00		Minimum Daily Average: 2.88 ppb on Apr 1		Hours of Data: 682																																													
Maximum Diurnal Average: 15.65 ppb at hour 7		Minimum Diurnal Average: 2.89 ppb at hour 14		Hours of Missing Data: 38																																													
Monthly Average: 7.507 ppb		Percentiles: P ₁ = 0.3 P ₁₀ = 1.5 Q ₁ = 2.9 Median = 4.7 Q ₃ = 9.6 P ₉₀ = 17.3 P ₉₉ = 37.2		Hours of Calibration: 38																																													
				Percent Operational Time: 100.0																																													
Day	Hourly Period Ending At																								Daily Average	Daily Maximum																							
	1	2	3	4	5	6	7	8	9	10	11	12	13	14	15	16	17	18	19	20	21	22	23	24																									
1-Apr	0.6	2.0	0.6	Z	0.2	0.3	0.3	0.3	0.3	0.6	0.3	0.2	0.1	0.1	2.2	8.3	12.1	4.7	3.6	4.8	3.6	2.0	8.8	10.0	2.88	12.13																							
2-Apr	13.5	10.6	10.3	Z	15.3	12.6	25.1	7.4	6.9	6.4	5.6	3.8	3.1	2.6	5.3	4.9	3.0	4.5	1.1	5.9	13.8	20.9	28.2	37.1	10.79	37.08																							
3-Apr	23.3	21.3	13.5	Z	12.4	15.6	27.1	22.5	19.3	12.6	7.4	2.8	2.0	2.0	2.2	1.8	1.7	1.9	1.4	4.1	3.4	2.9	3.3	3.6	9.05	27.07																							
4-Apr	2.7	3.8	6.3	Z	6.4	8.4	6.4	6.7	4.5	6.1	4.9	4.9	6.1	4.7	4.4	4.4	3.8	3.1	3.8	5.9	5.2	3.6	3.2	3.7	4.91	8.36																							
5-Apr	2.8	2.2	3.0	Z	5.4	3.8	4.6	4.6	5.6	6.0	5.3	4.1	3.9	3.0	2.5	2.9	3.3	3.6	2.5	4.9	2.5	2.5	3.3	3.7	3.75	6.04																							
6-Apr	7.2	7.9	7.3	Z	11.3	11.1	13.1	10.4	6.1	3.6	4.1	6.0	4.6	4.4	2.5	2.3	2.8	3.3	4.9	10.6	7.0	6.9	22.5	20.4	7.85	22.53																							
7-Apr	17.0	18.7	16.3	Z	24.3	13.9	9.5	9.5	4.8	10.1	5.2	3.2	4.3	4.2	2.9	3.0	1.3	0.4	0.8	2.0	21.8	12.1	21.4	27.8	10.20	27.76																							
8-Apr	25.1	26.9	31.8	Z	16.6	10.3	17.1	13.0	6.9	7.8	5.0	3.4	3.8	2.9	4.7	3.3	3.0	2.9	3.7	6.3	17.1	17.4	2.0	7.3	10.38	31.81																							
9-Apr	18.1	17.4	21.6	Z	18.3	7.4	8.4	7.0	6.6	4.0	3.0	4.1	2.6	3.0	2.7	2.7	3.1	6.5	10.0	6.9	2.9	5.5	5.5	16.0	7.97	21.59																							
10-Apr	18.8	18.6	18.2	Z	40.0	35.7	47.7	43.6	30.7	16.2	14.7	3.3	4.4	2.8	2.5	3.9	4.7	10.3	10.3	10.1	8.5	6.1	5.9	5.6	15.77	47.68																							
11-Apr	4.6	6.6	4.4	Z	12.5	15.4	13.0	18.9	10.8	2.4	2.8	3.5	4.4	0.3	0.3	0.4	3.5	1.3	3.8	3.0	2.1	2.6	1.7	6.6	5.43	18.89																							
12-Apr	2.3	1.0	5.4	Z	3.8	2.9	6.5	7.1	6.8	9.1	4.1	3.8	3.7	0.8	0.5	0.6	2.7	0.2	2.7	0.9	1.4	5.5	9.3	14.3	4.14	14.32																							
13-Apr	13.4	14.8	22.8	Z	24.6	23.4	26.5	19.0	13.5	13.0	10.1	2.7	3.7	2.4	2.8	2.8	7.7	2.5	3.0	2.6	12.1	17.9	15.9	19.5	12.02	26.47																							
14-Apr	15.1	13.6	16.5	Z	17.1	10.2	3.8	3.5	7.2	4.8	5.1	3.4	3.6	2.7	3.3	1.8	0.9	0.4	0.3	0.4	0.6	10.5	11.8	17.5	6.70	17.55																							
15-Apr	16.9	18.9	22.6	Z	23.2	37.5	33.8	C	C	C	C	C	C	C	C	3.9	4.0	3.8	3.2	3.0	5.0	12.9	12.3	9.7	--	37.55																							
16-Apr	4.1	8.6	4.8	Z	14.6	27.7	67.5	32.6	12.3	8.2	6.9	3.3	3.0	4.3	5.1	4.7	2.1	4.6	3.5	1.5	3.4	2.2	12.5	14.1	10.94	67.55																							
17-Apr	10.4	6.5	9.3	Z	15.5	20.3	23.7	17.7	7.8	9.8	9.7	3.9	3.6	1.3	0.7	2.2	5.5	0.8	1.7	5.0	1.9	0.3	0.2	2.3	6.96	23.68																							
18-Apr	15.6	16.2	14.8	Z	11.7	18.1	9.7	15.4	19.2	0.4	0.4	0.7	0.5	0.5	0.6	2.1	1.7	0.7	0.8	2.6	3.1	4.9	5.5	4.9	6.53	19.22																							
19-Apr	8.2	8.3	4.3	Z	13.9	10.4	6.7	5.9	7.1	7.9	6.0	3.3	3.9	2.1	2.1	3.1	5.1	3.0	2.0	2.9	3.3	18.1	12.2	6.0	6.34	18.06																							
20-Apr	3.9	2.0	3.0	Z	8.7	8.3	15.0	17.1	7.2	8.0	4.4	4.4	4.2	3.1	4.8	3.3	1.7	0.8	12.6	18.7	24.4	15.0	14.2	14.7	8.67	24.42																							
21-Apr	11.9	12.0	4.1	Z	3.1	3.8	8.1	32.4	10.6	8.4	6.1	7.4	2.9	2.8	3.8	3.7	5.1	4.4	4.4	7.4	17.1	21.9	11.0	7.2	8.68	32.45																							
22-Apr	5.7	9.1	6.3	Z	16.8	17.7	24.7	16.5	13.6	9.1	4.7	3.7	6.6	8.0	7.6	3.0	0.7	1.2	1.8	0.9	2.2	3.3	2.3	4.5	7.41	24.67																							
23-Apr	10.7	9.1	7.2	Z	10.2	6.7	0.9	0.9	1.9	2.8	3.8	3.0	1.1	0.7	1.7	1.7	1.3	1.3	1.6	4.9	4.3	2.8	2.6	1.8	3.61	10.68																							
24-Apr	3.1	1.8	2.0	Z	3.9	3.4	4.7	6.5	5.5	4.9	3.2	4.4	5.6	6.4	5.0	3.3	5.1	5.9	6.2	8.3	6.7	2.3	1.8	1.9	4.43	8.29																							
25-Apr	2.9	2.4	2.3	Z	9.4	9.6	8.9	8.4	5.7	5.1	4.1	6.0	4.1	4.4	3.7	3.1	2.3	3.8	4.1	2.9	2.3	2.2	2.9	4.4	4.57	9.62																							
26-Apr	4.7	8.5	6.7	Z	10.6	10.8	8.3	8.6	10.4	7.2	3.7	2.3	3.0	1.5	3.2	3.3	2.8	4.5	3.3	4.6	7.9	9.1	8.6	8.0	6.16	10.83																							
27-Apr	5.1	4.5	3.8	Z	9.4	8.8	10.9	37.3	50.7	13.0	3.8	3.8	5.3	6.6	5.6	7.3	4.8	4.1	2.0	3.3	4.1	5.1	3.1	1.5	8.86	50.73																							
28-Apr	3.5	3.7	5.3	Z	13.8	12.1	19.0	20.6	21.0	13.2	9.6	5.6	4.5	3.5	5.0	5.1	5.3	3.3	2.8	0.6	0.9	0.4	0.6	0.6	6.96	21.03																							
29-Apr	1.3	4.1	3.5	Z	4.3	2.7	1.5	5.7	6.3	15.1	13.5	7.8	4.4	1.6	4.4	1.8	4.2	1.7	0.3	4.0	3.4	3.6	6.1	6.1	4.68	15.12																							
30-Apr	2.5	1.7	2.5	Z	20.8	30.2	17.0	16.0	7.9	6.7	8.0	7.1	3.3	0.9	1.9	0.5	1.2	1.9	2.4	3.0	6.7	3.4	2.8	7.6	6.80	30.25																							
																								9.17	9.43	9.36	--	13.28	13.30	15.65	14.32	10.94	7.68	5.71	4.00	3.66	2.89	3.24	3.17	3.56	3.05	3.49	4.73	6.62	7.46	8.06	9.61	Diurnal Average	
																								25.11	26.94	31.81	--	40.05	37.55	67.55	43.64	50.73	16.23	14.69	7.82	6.63	8.02	7.62	8.34	12.13	10.33	12.59	18.69	24.42	21.88	28.22	37.08	Diurnal Maximum	
Z - zerospan C - Calibration																																																	
Alberta Ambient Air Quality Objectives (AAQO): 1-hr --- ppb 24-hr --- ppb																																																	



WCAS - Hinton
Summary of Hourly Averages

PM2.5 (PM_{2.5}) - µg/m³
April 2015

Maximum Value: 121.59 µg/m ³ on Apr 20 20:00 Maximum Daily Average: 20.92 µg/m ³ on Apr 20																						Hours in Service: 720 Hours of Data: 712																											
Minimum Value: 1.2 µg/m ³ on Apr 29 19:00 Minimum Daily Average: 4.23 µg/m ³ on Apr 24 Maximum Diurnal Average: 11.89 µg/m ³ at hour 20 Minimum Diurnal Average: 5.58 µg/m ³ at hour 14 Monthly Average: 8.940 µg/m ³ Percentiles: P ₁ = 2.3 P ₁₀ = 3.8 Q ₁ = 4.9 Median = 7.0 Q ₃ = 10.3 P ₉₀ = 16.1 P ₉₉ = 33.8																						Hours of Missing Data: 8 Hours of Calibration: 8 Percent Operational Time: 100.0																											
Day	Hourly Period Ending At																								Daily Average	Daily Maximum																							
	1	2	3	4	5	6	7	8	9	10	11	12	13	14	15	16	17	18	19	20	21	22	23	24																									
1-Apr	4.0	4.5	3.0	3.7	3.9	4.3	3.2	3.6	3.3	4.1	5.3	4.5	6.0	5.4	8.3	9.8	8.1	5.5	4.1	4.7	4.3	3.3	4.5	4.1	4.82	9.80																							
2-Apr	5.0	3.9	3.8	4.2	5.1	4.0	4.9	4.4	5.4	3.3	3.6	5.0	3.9	4.0	5.5	2.4	2.7	4.1	4.3	5.5	8.8	8.7	13.8	12.4	5.37	13.83																							
3-Apr	7.7	7.7	5.4	6.0	5.6	5.8	9.8	12.7	10.2	20.6	10.9	6.9	7.0	7.6	7.0	10.0	12.0	11.7	9.6	15.9	13.7	10.6	9.0	8.1	9.65	20.61																							
4-Apr	6.3	7.0	6.6	6.7	6.7	7.7	8.1	7.6	7.5	5.3	4.7	5.1	4.0	4.4	3.8	4.3	3.9	4.2	4.3	5.9	6.8	6.1	5.9	5.6	5.77	8.12																							
5-Apr	5.1	4.5	4.5	4.7	5.4	5.7	5.4	5.6	5.7	5.6	5.8	5.2	5.5	4.6	4.6	6.5	5.8	6.5	4.8	5.7	5.4	5.2	5.5	5.9	5.39	6.52																							
6-Apr	6.7	6.9	6.3	7.0	8.3	8.2	7.9	7.6	6.1	6.5	7.1	8.3	7.9	7.6	5.3	5.8	7.1	8.2	9.1	11.3	10.1	8.6	16.1	12.9	8.20	16.08																							
7-Apr	11.0	12.0	9.1	6.3	8.6	7.4	7.0	11.7	5.0	8.5	4.2	4.0	6.2	5.4	4.7	5.0	5.2	4.6	6.0	6.5	14.3	9.4	15.6	16.5	8.10	16.48																							
8-Apr	14.0	12.3	11.3	9.1	7.9	6.1	6.5	7.4	5.5	8.6	3.6	5.8	6.6	6.0	8.1	7.6	9.2	10.8	10.5	13.0	16.5	18.6	6.9	10.0	9.25	18.59																							
9-Apr	20.5	18.9	13.7	10.2	12.4	8.4	9.7	7.9	10.0	8.0	6.1	8.4	8.4	9.9	9.8	9.3	10.4	14.6	18.3	16.2	8.8	12.9	13.0	26.3	12.17	26.29																							
10-Apr	31.1	17.9	15.2	17.5	26.2	32.7	31.2	19.3	19.8	29.3	30.7	12.6	12.4	8.2	8.9	9.4	11.8	17.0	15.9	14.7	12.1	8.9	7.2	8.2	17.42	32.71																							
11-Apr	7.8	18.1	11.6	9.3	12.7	16.0	10.2	12.6	9.1	10.4	3.5	2.7	1.7	1.6	2.9	3.4	6.1	4.6	5.5	6.3	5.0	5.3	2.8	6.0	7.30	18.08																							
12-Apr	4.4	3.5	6.6	4.3	4.9	6.4	4.8	3.9	8.2	11.3	7.3	3.6	6.1	3.5	4.5	3.4	6.3	4.4	7.5	4.9	6.2	7.6	9.9	6.8	5.85	11.25																							
13-Apr	11.8	7.3	10.3	17.5	19.7	14.1	12.6	13.1	10.7	13.7	11.1	2.6	3.2	3.0	3.8	4.3	5.9	6.2	6.6	7.0	15.9	25.4	17.3	8.8	10.50	25.38																							
14-Apr	18.7	13.1	8.5	13.1	13.2	11.0	4.3	6.8	5.8	3.0	6.3	3.8	3.9	4.3	4.2	4.3	5.1	6.0	4.7	5.6	7.2	15.7	21.8	22.4	8.86	22.40																							
15-Apr	17.7	13.3	17.5	14.2	18.5	25.4	24.1	C	C	C	C	C	C	C	C	9.2	10.2	7.7	5.7	4.0	6.9	14.5	14.3	12.0	--	25.41																							
16-Apr	5.3	7.0	4.3	4.9	10.2	30.0	57.6	35.6	11.8	9.1	15.5	10.2	8.9	8.3	9.1	9.2	7.4	8.9	8.6	8.4	15.9	16.1	17.4	16.1	13.99	57.59																							
17-Apr	7.8	4.5	6.6	7.9	10.1	16.4	21.9	13.0	10.0	12.0	13.2	8.3	10.7	6.7	3.0	3.8	8.8	6.2	6.5	10.8	7.1	5.6	5.2	5.7	8.83	21.95																							
18-Apr	15.3	11.8	10.6	6.7	7.2	7.3	7.4	6.6	8.5	3.4	4.3	4.7	5.1	7.3	8.9	8.5	7.1	7.3	7.4	13.3	16.6	18.7	15.0	15.3	9.35	18.75																							
19-Apr	13.8	11.8	12.1	21.3	26.9	16.8	11.2	9.6	9.7	9.0	5.9	5.0	8.9	5.1	4.7	5.5	6.6	6.3	6.2	7.9	11.4	18.5	30.1	34.3	12.45	34.33																							
20-Apr	17.7	6.8	9.3	20.8	19.5	20.6	23.8	25.6	8.5	9.6	5.4	6.8	5.7	6.0	6.4	6.5	4.8	7.7	57.5	121.6	64.4	18.1	11.0	18.0	20.92	121.59																							
21-Apr	10.8	10.9	4.6	3.8	4.0	3.8	6.6	17.4	11.1	10.7	8.4	8.4	3.1	3.6	5.4	9.8	9.8	8.4	6.5	8.3	21.9	39.1	17.6	12.1	10.25	39.10																							
22-Apr	8.8	22.2	10.3	9.4	19.4	17.5	19.2	18.2	19.8	11.5	10.0	11.0	7.4	6.0	6.2	3.8	1.5	3.0	2.8	2.3	2.7	3.8	1.4	2.7	9.20	22.19																							
23-Apr	5.5	4.7	4.4	8.1	5.5	6.2	2.4	2.4	2.3	2.7	1.8	4.4	3.1	3.5	4.2	8.9	6.8	7.9	13.9	13.7	11.5	9.7	6.0	5.0	6.02	13.86																							
24-Apr	4.3	3.9	3.6	4.0	4.0	4.0	4.6	5.4	5.0	4.6	4.1	3.7	3.9	4.6	4.0	3.7	4.3	5.2	4.8	5.3	5.0	3.5	3.1	3.0	4.23	5.39																							
25-Apr	3.0	3.2	3.3	3.6	4.4	5.3	5.5	6.5	6.1	6.3	5.7	6.5	6.2	7.7	7.3	6.9	7.5	8.5	8.1	8.4	7.7	7.3	7.7	7.5	6.26	8.52																							
26-Apr	7.2	8.9	7.0	8.4	8.5	8.2	8.7	10.4	11.4	14.6	7.7	5.1	5.3	5.0	5.0	6.7	7.3	5.3	5.6	5.7	6.4	6.9	14.4	9.5	7.90	14.56																							
27-Apr	5.3	6.0	6.2	6.3	10.3	8.1	9.0	16.3	38.5	9.7	4.0	6.3	7.3	8.3	9.0	11.2	9.7	9.0	5.9	6.1	6.0	6.1	3.6	3.0	8.79	38.50																							
28-Apr	5.3	4.7	10.8	6.2	11.0	8.1	11.6	11.3	11.1	9.9	8.7	10.1	6.3	8.0	23.4	14.6	9.6	8.2	7.7	7.0	15.4	4.3	3.5	4.0	9.20	23.43																							
29-Apr	7.1	4.2	4.9	5.8	5.8	4.4	3.8	4.9	2.9	3.6	5.0	3.7	4.6	3.5	5.2	3.2	4.1	3.2	1.2	4.9	3.8	4.4	4.0	3.7	4.25	7.07																							
30-Apr	3.3	2.2	3.0	5.4	10.7	10.7	8.9	6.1	5.7	6.4	8.4	8.1	6.7	2.4	4.4	3.5	3.9	3.4	3.9	5.8	9.4	5.8	6.3	8.9	5.98	10.74																							
																								9.75	8.79	7.81	8.55	10.55	11.03	11.74	10.81	9.48	9.01	7.53	6.24	6.07	5.58	6.48	6.69	6.96	7.16	8.78	11.89	11.57	10.95	10.32	10.49	Diurnal Average	
																								31.08	22.19	17.46	21.28	26.91	32.71	57.59	35.63	38.50	29.35	30.74	12.55	12.38	9.91	23.43	14.59	11.99	16.98	57.54	121.59	64.41	39.10	30.06	34.33	Diurnal Maximum	
C - Calibration																																																	
Alberta Ambient Air Quality Objectives (AAAQO): 1-hr 80 ul/m ³ 24-hr 30 ul/m ³																																																	

Calibration Data Summary

West Central Airshed Society

Operator: WCAS

Location: Station 906, Hinton

Calibration Date: April 15, 2015

Parameter: NO/NO₂/NO_x

Instrument: Teco 42i

Serial Number: CM13040041

Previous Calibration Date: March 18, 2015

Calibration: Routine

Calibration Equipment: SABIO 2010 sn# 05200311

Barometric Pressure: 26.66" Hg

Calibration Method: Standard Gas Dilution/ GPT

Cylinder ID: FF 9469

Temperature: 21.0° C

Cylinder Concentration: 12.6 ppm NO / NO_x

In Service: Jan. 14,2015

Technician: J. McClintock

Instrument Settings	NO bkg ppb	NO _x bkg ppb	Pre-reactor bkg ppb	NO Coefficient	NO _x Coefficient	NO ₂ Coefficient	Monitoring Range
Previous	4.5	4.8	na	0.754	1.001	0.997	300 ppb
Current	4.5	4.7	na	0.740	1.002	0.997	300 ppb

NO	Final Zero: 0.6 ppb	Final Span: 194.6 ppb	As Found Correction Factor: 0.988
NO ₂	Final Zero: 0.1 ppb	Final Span: 0.7 ppb	As Found Correction Factor: 1.003
NO _x	Final Zero: 0.7 ppb	Final Span: 194.8 ppb	As Found Correction Factor: 0.992

Results of Linear Regression			Slope	Intercept	R ²
NO	R _c vs C _c	Previous	99.867290	40.676510	0.999987
		Current	99.989830	-50.661010	0.999972
	C _i vs C _c	Current	1.000000	0.000009	0.999972
NO ₂	R _c vs C _c	Previous	100.675300	-65.639070	0.999987
		Current	100.392600	-5.058926	0.999997
	C _i vs C _c	Current	1.000000	0.000007	0.999997
NO _x	R _c vs C _c	Previous	100.299000	27.794790	0.999987
		Current	100.276600	-55.480750	0.999959
	C _i vs C _c	Current	1.000000	0.000021	0.999959

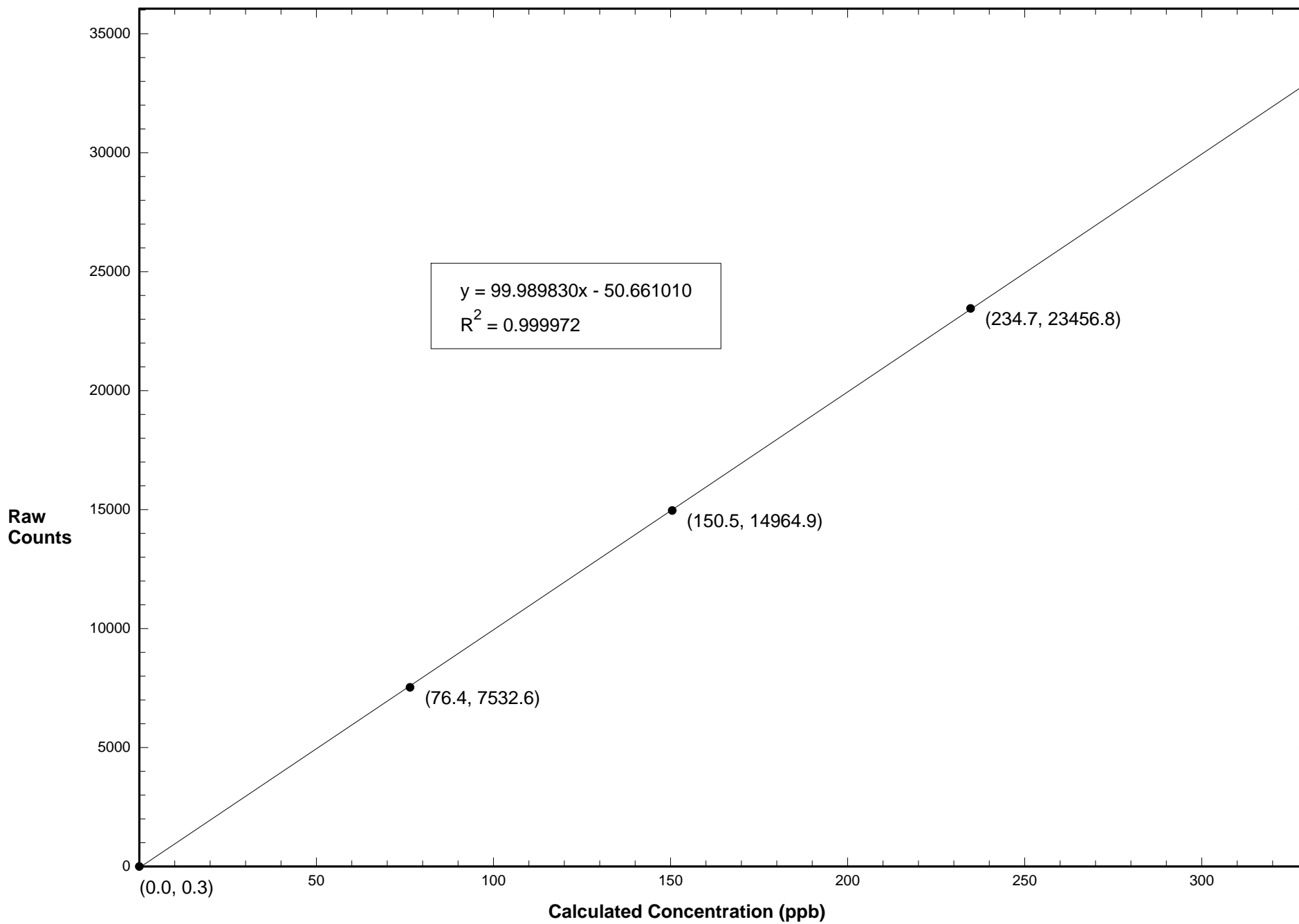
Comments:

Calibration Data Summary (Page 2)

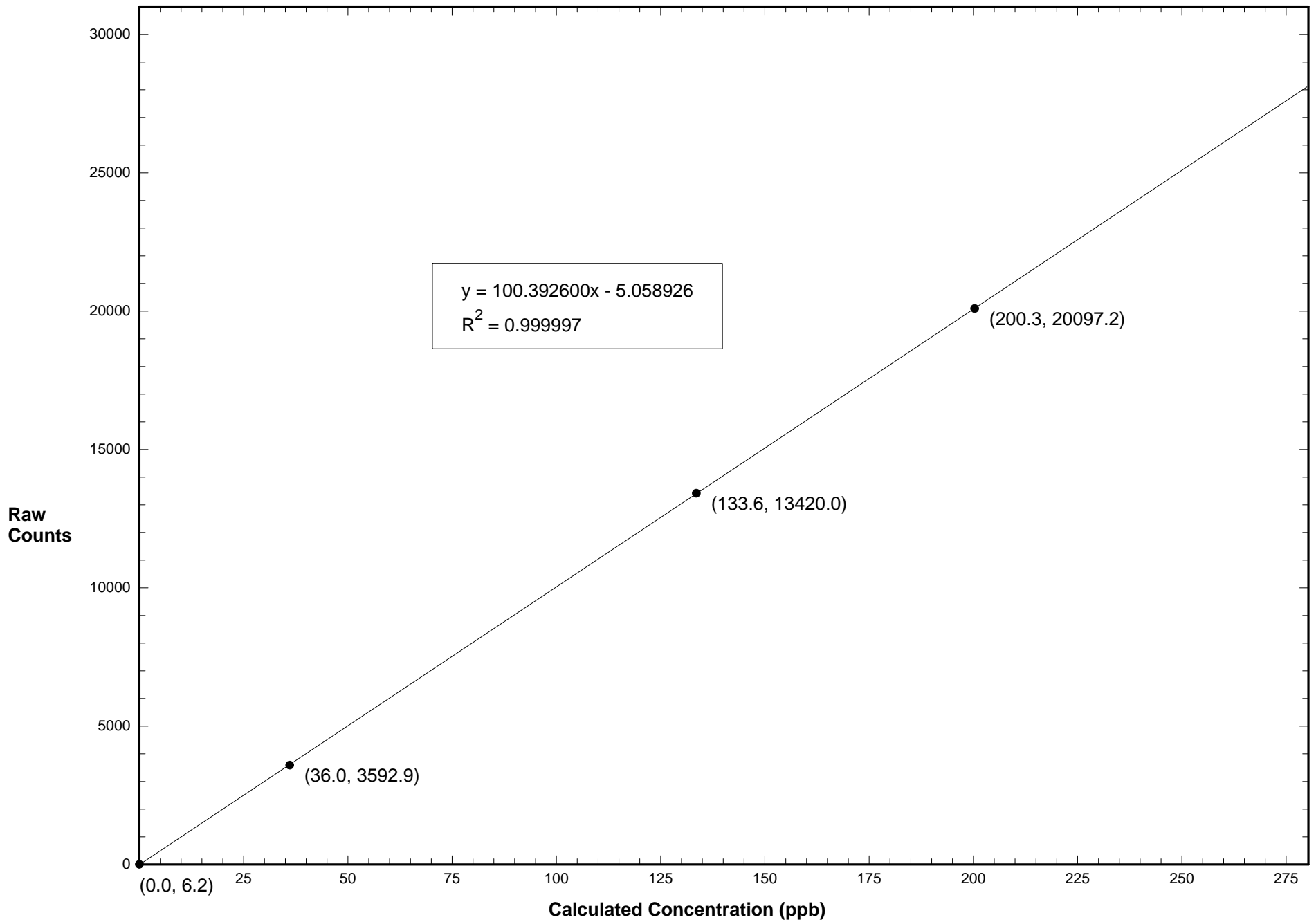
April 15, 2015 - Station 906

NO Flow Rate (LPM)	Dilution Flow Rate (LPM)	Calculated Concentration C _c (ppb)	Raw Count Output R _c	Indicated Concentration C _i (ppb)	Correction Factor C _c /C _i		
0.09730	5.126	234.7	23456.8	235.1	0.998		
0.06170	5.105	150.5	14964.9	150.2	1.002		
0.03100	5.079	76.4	7532.6	75.8	1.008		
0.00000	5.000	0.0	0.3	0.5			
NO Calibration					Average Correction Factor:	1.003	
0.09730	5.126	234.7	23522.2	235.1	0.998		
0.06170	5.105	150.5	15009.2	150.2	1.002		
0.03100	5.079	76.4	7529.0	75.6	1.011		
0.00000	5.000	0.0	7.3	0.6			
NO _x Calibration					Average Correction Factor:	1.003	
Reference Concentration NO (ppb)	Raw Count Output NO	Calculated Concentration NO (ppb)	Calculated Concentration NO ₂ , C _c (ppb)	Raw Count Output R _c	Indicated Concentration C _i (ppb)	Correction Factor C _c /C _i	Converter Efficiency C _i /C _c
231.7	3087.1	31.4	200.3	20097.2	200.2	1.000	1.000
231.7	9760.1	98.1	133.6	13420.0	133.7	0.999	1.001
231.7	19512.0	195.6	36.0	3592.9	35.8	1.006	0.994
			0.0	6.2	0.1		
					Average Correction Factor:	1.002	
NO ₂ Gas Phase Titration					Average Converter Efficiency: 0.998		
Parameter	Correction Factor (Previous)	Correction Factor: (Current)	Percent Change of Correction Factor				
NO	0.998	0.998	0.0				
NO ₂	1.006	1.000	-0.6				
NO _x	0.999	0.998	-0.1				

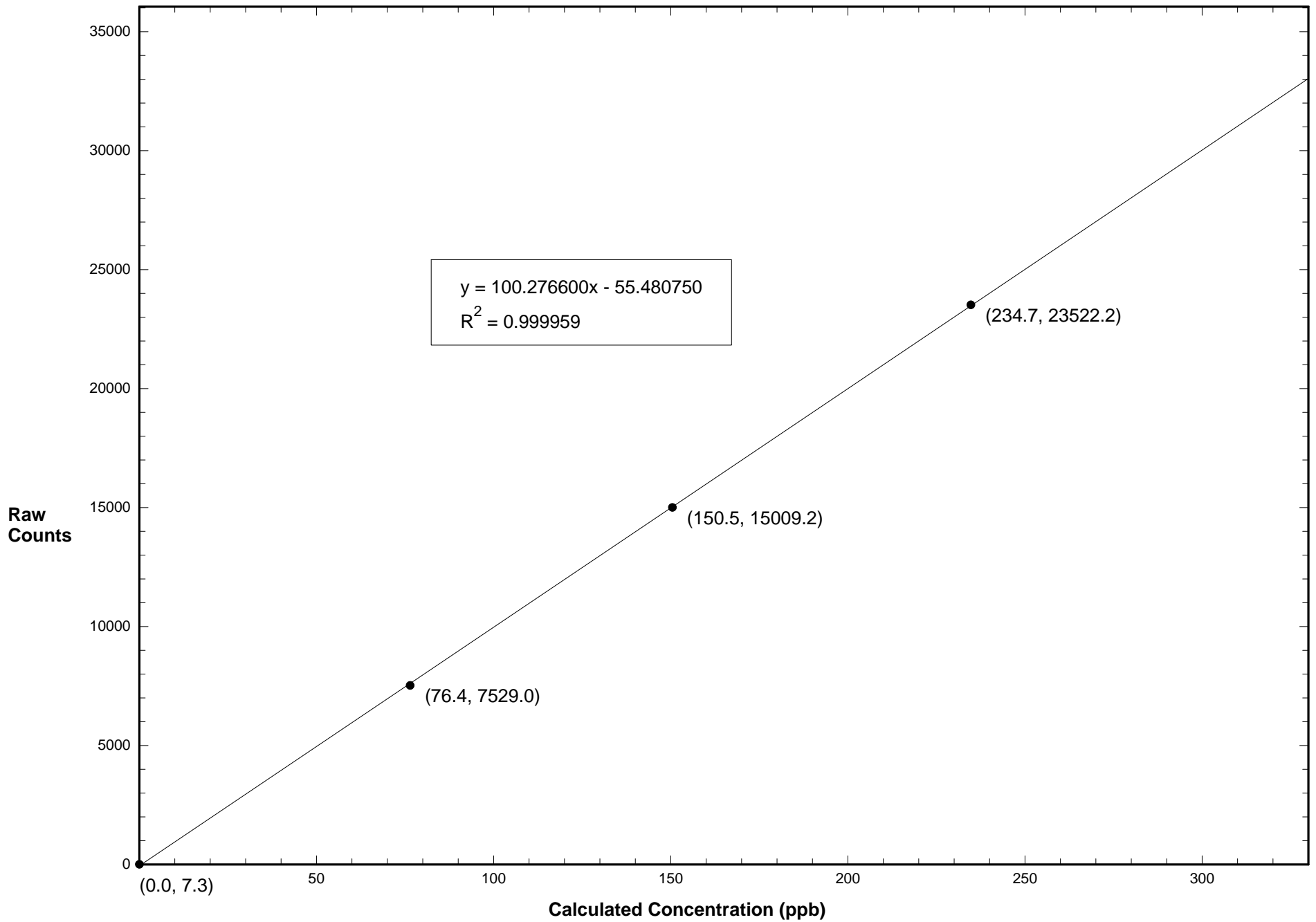
Station 906 NO April 15, 2015: Linear Regression



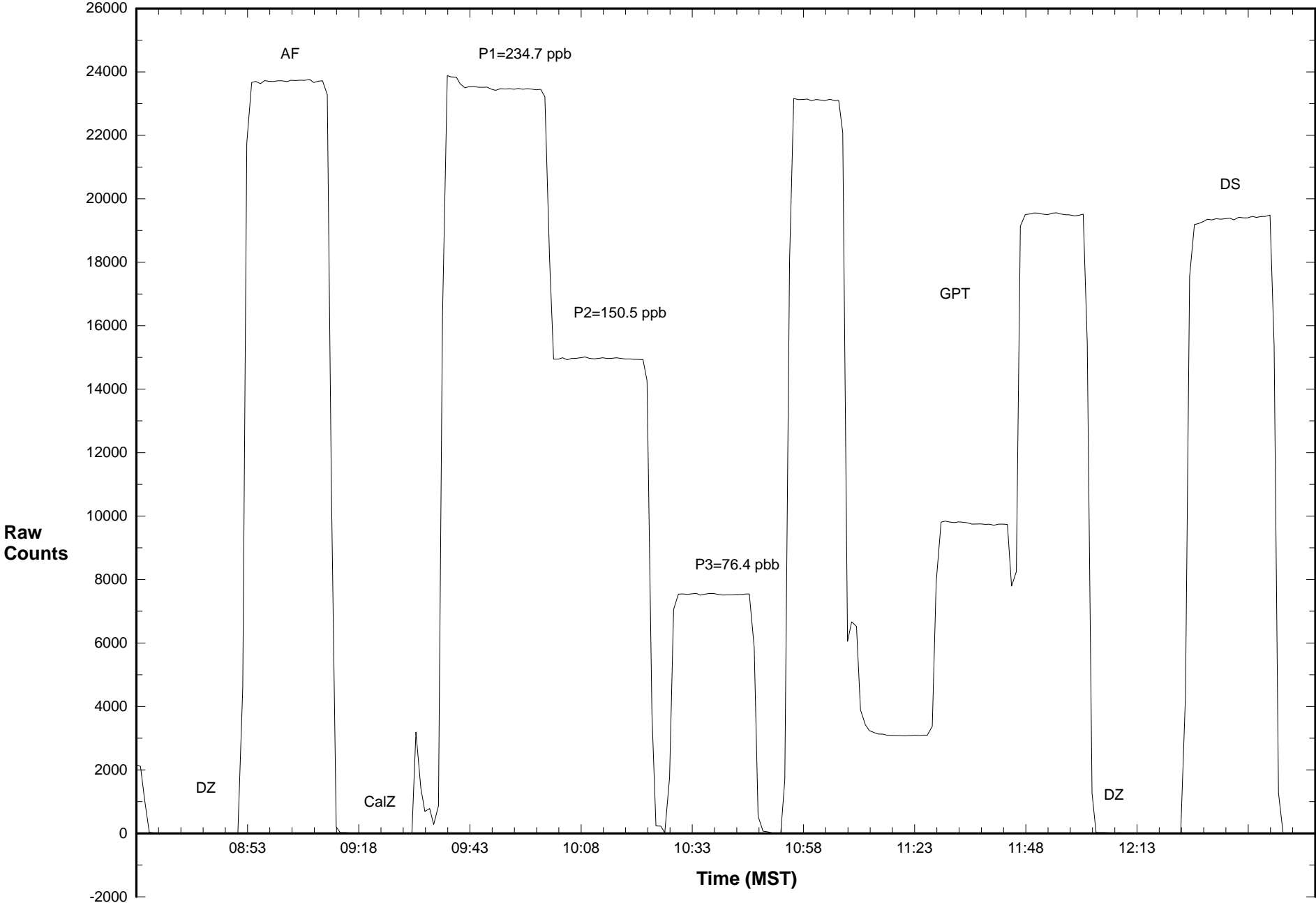
Station 906 NO2 April 15, 2015: Linear Regression



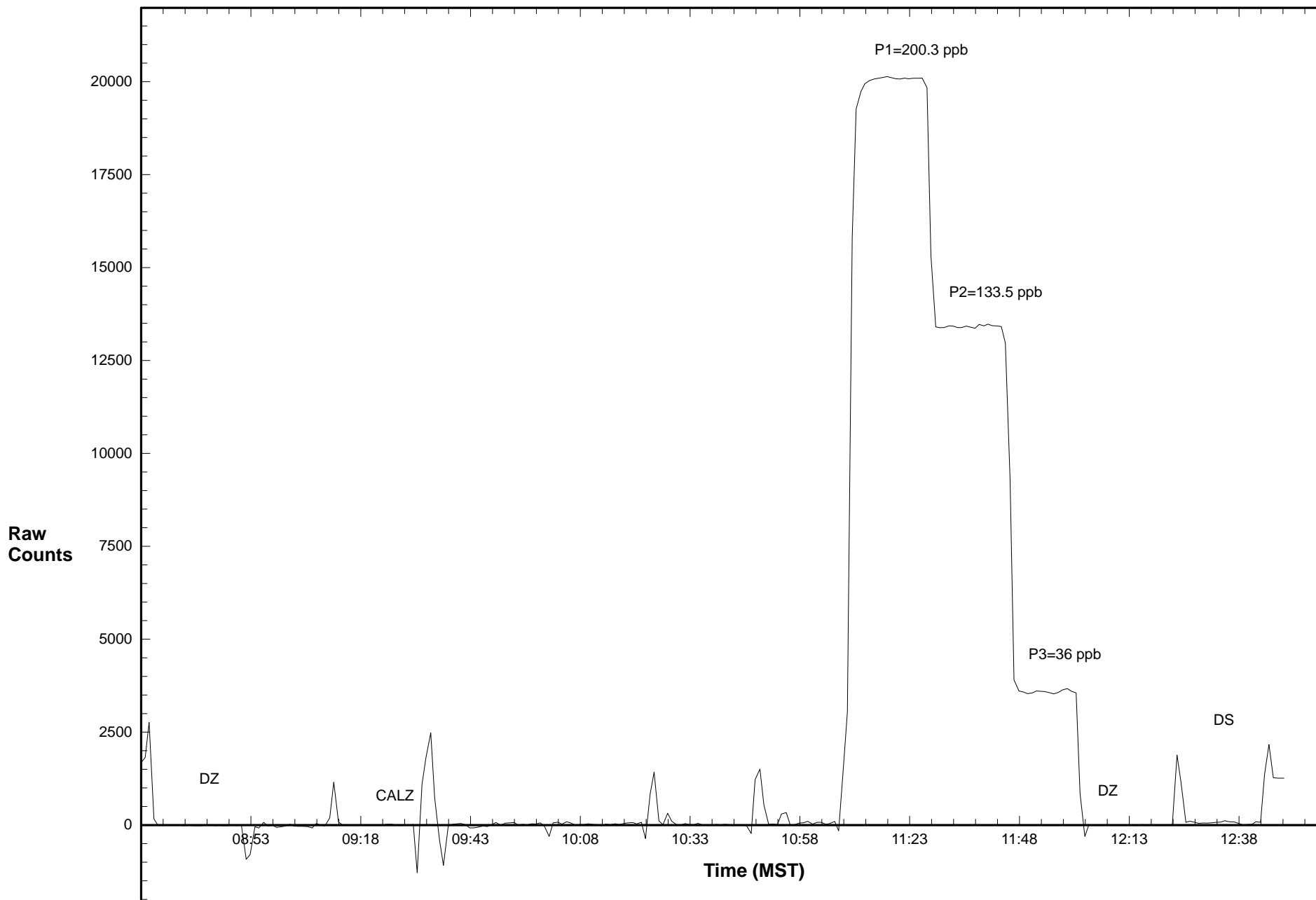
Station 906 NOX April 15, 2015: Linear Regression



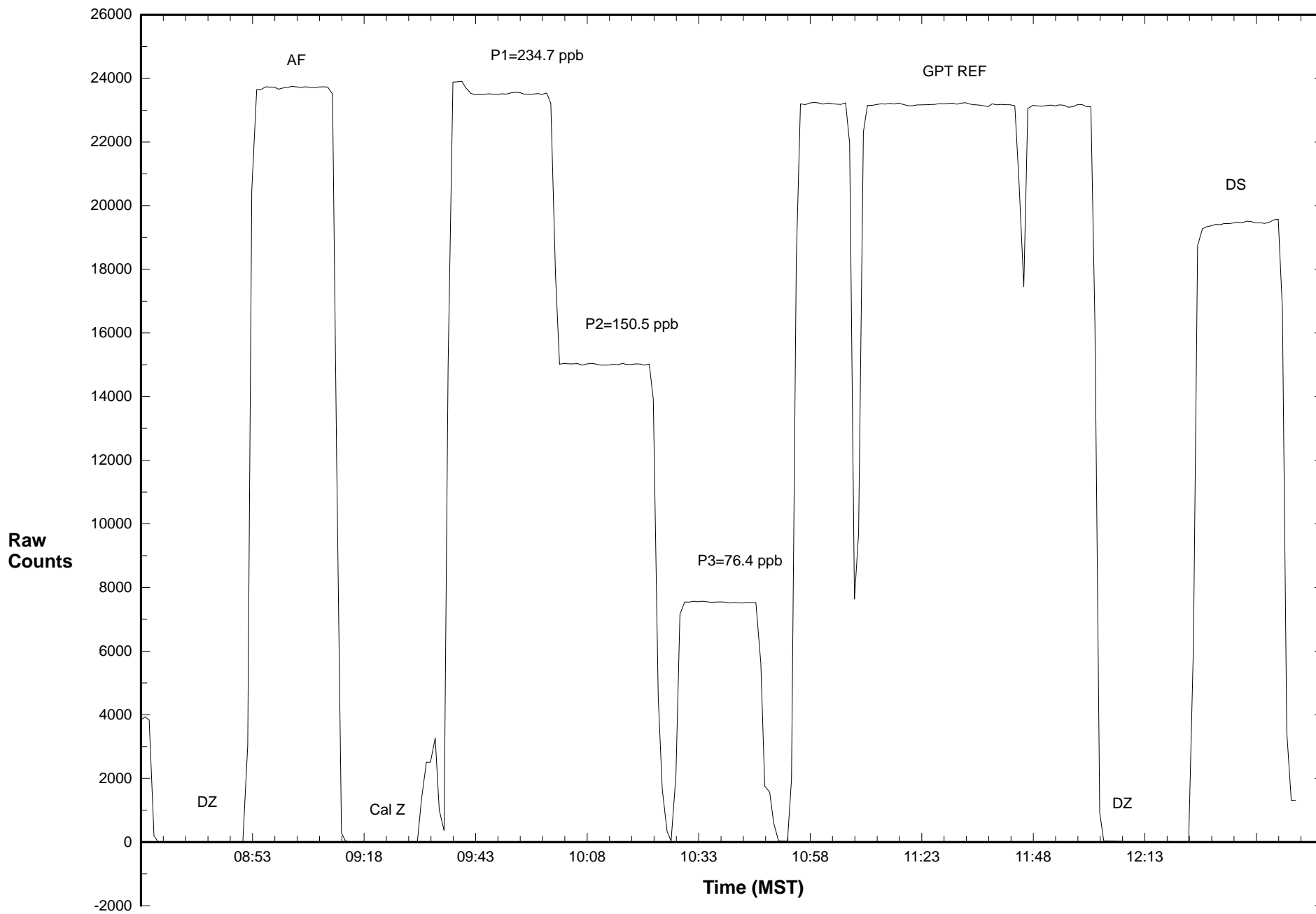
Station 906 NO April 15, 2015: Calibration Graph



Station 906 NO2 April 15, 2015: Calibration Graph



Station 906 NOX April 15, 2015: Calibration Graph



Calibration Data Summary

West Central Airshed Society

Operator: WCAS

Location: Station 906, Hinton

Calibration Date: April 15, 2015

Parameter: O₃

Instrument: Teco 49i

Serial Number: 1136451325

Previous Calibration Date: March 18, 2015

Calibration: Routine

Calibration Equipment: 2B Technologies 306 sn#113 Barometric Pressure: 26.67" Hg

Calibration Method: Certified Ozone Generator

Temperature: 21.0° C

Technician: J. McClintock

Instrument Settings	Background	Coefficient	Monitoring Range
Previous	0.2	1.397	500 ppb
Current	0.0	1.3920	500 ppb

Final Zero: -3.0 ppb

Final Span: 365.1 ppb

As Found Correction Factor: 0.984

Calibration System Flow Rate (LPM)	Calculated Concentration C _c (ppb)	Raw Count Output R _c	Indicated Concentration C _i (ppb)	Correction Factor C _c /C _i
3.000	435.0	26066.2	434.0	1.002
3.000	275.0	16604.3	275.8	0.997
3.000	110.0	6823.4	112.2	0.980
3.000	0.0	-3.6	-1.9	

Results of Linear Regression

R _c vs C _c	Slope	Intercept	R ²
Previous	59.887570	29.904790	0.999971
Current	59.807470	112.042800	0.999906
C _i vs C _c			
Current	1.000000	0.000137	0.999905

Average Correction Factor: 0.993

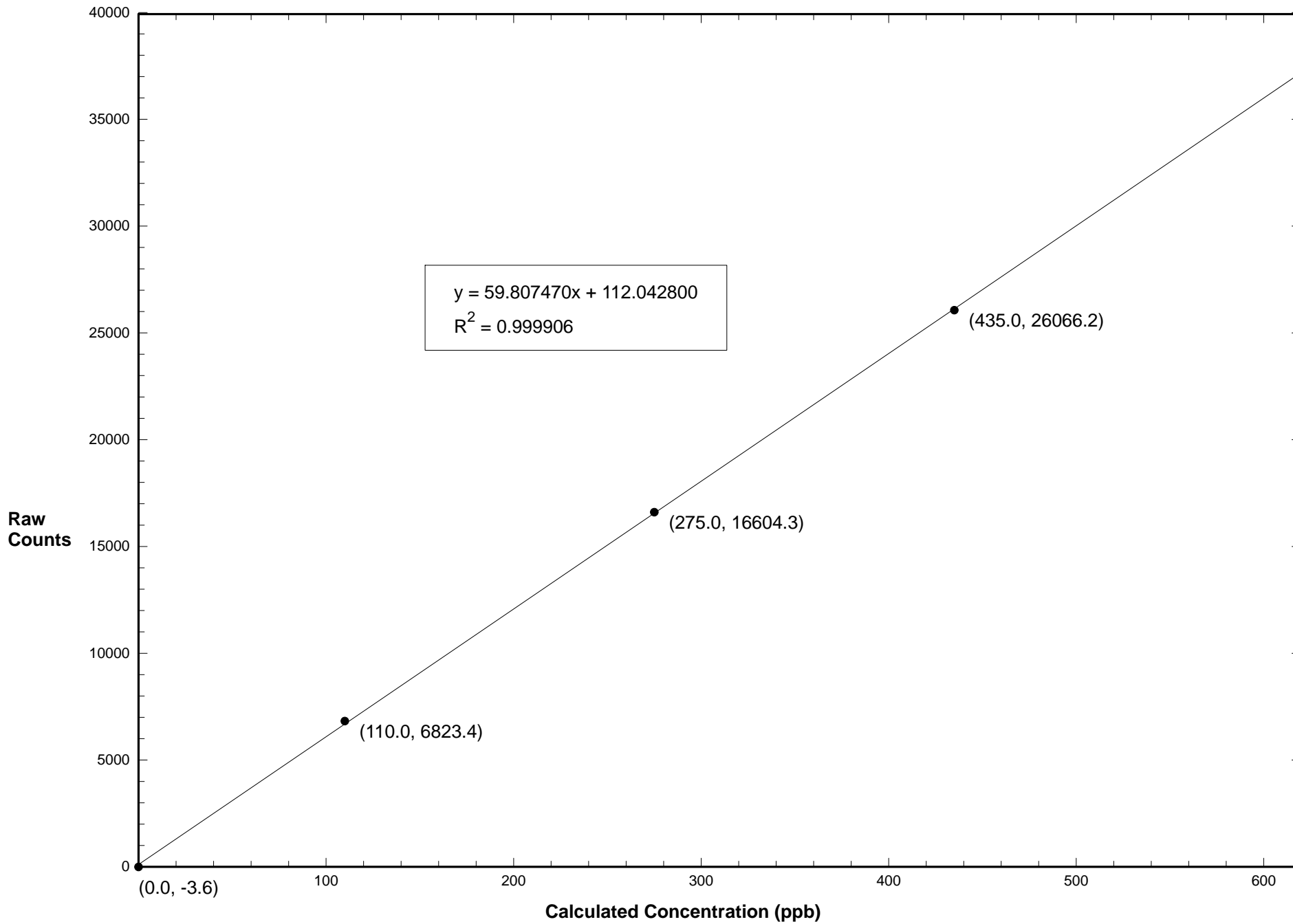
Previous Correction Factor: 0.997

Current Correction Factor: 1.002

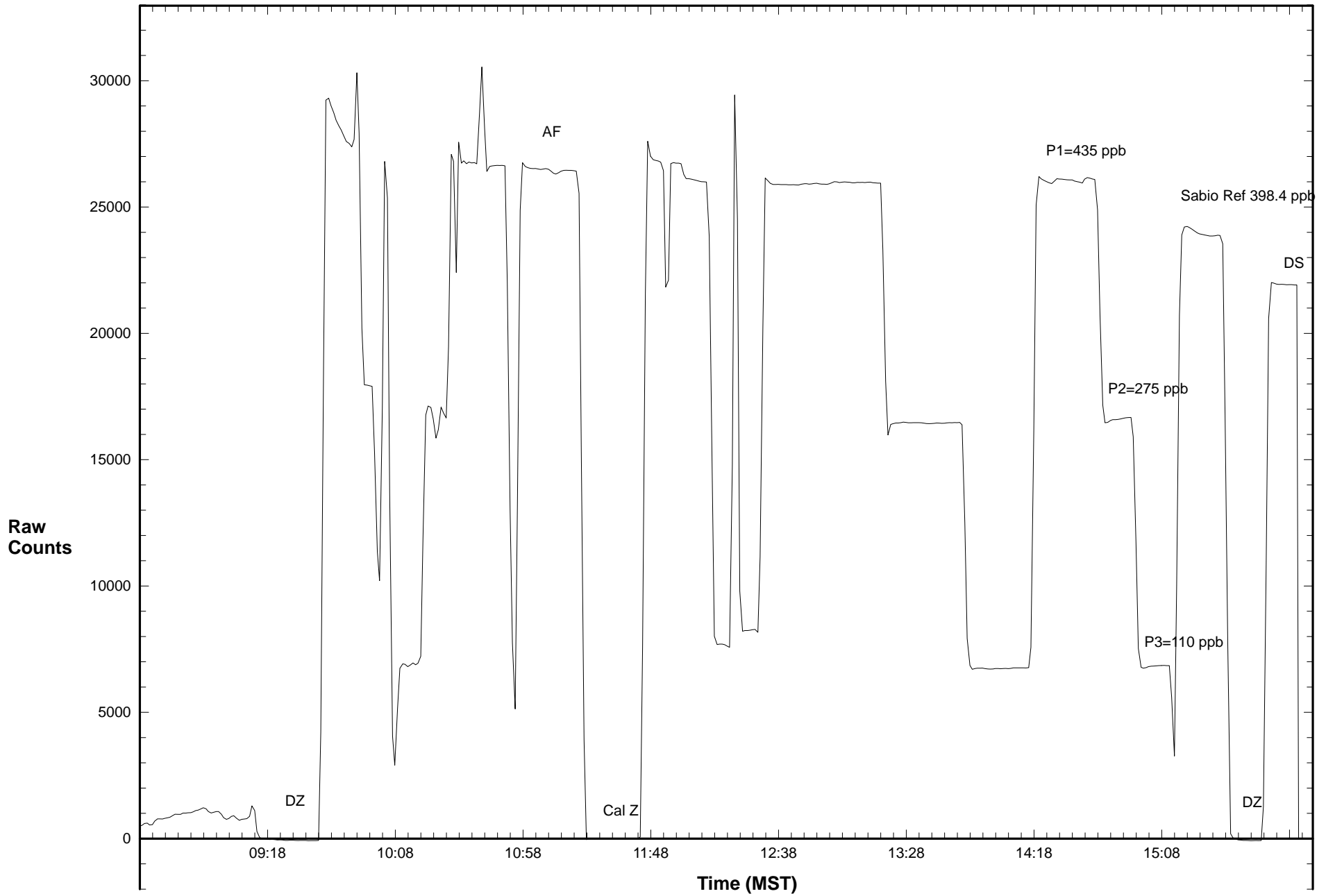
Percent Change of Correction Factor: 0.5

Comments: Ref. 2B cal with Sabio after the 3rd point.

Station 906 O3 April 15, 2015: Linear Regression



Station 906 O3 April 15, 2015: Calibration Graph



Calibration Data Summary

West Central Airshed Society

Operator: WCAS

Location: Station 906, Hinton
 Calibration Date: April 15, 2015
 Parameter: SO₂

Instrument: Teco 43i	Serial Number: CM 12499009	Previous Calibration Date: March 18, 2015
Calibration: Routine	Calibration Equipment: SABIO 2010 sn# 05200311	Barometric Pressure: 26.66" Hg
Calibration Method: Standard Gas Dilution	Cylinder ID: FF 9469	Temperature: 21.0° C
Cylinder Concentration: 6.2 ppb SO ₂	In Service: Jan. 14,2015	Technician: J. McClintock

Instrument Settings	SO ₂ bkg ppb	SO ₂ Coefficient	Monitoring Range
Previous	26.3	0.996	200 ppb
Current	25.6	0.974	200 ppb

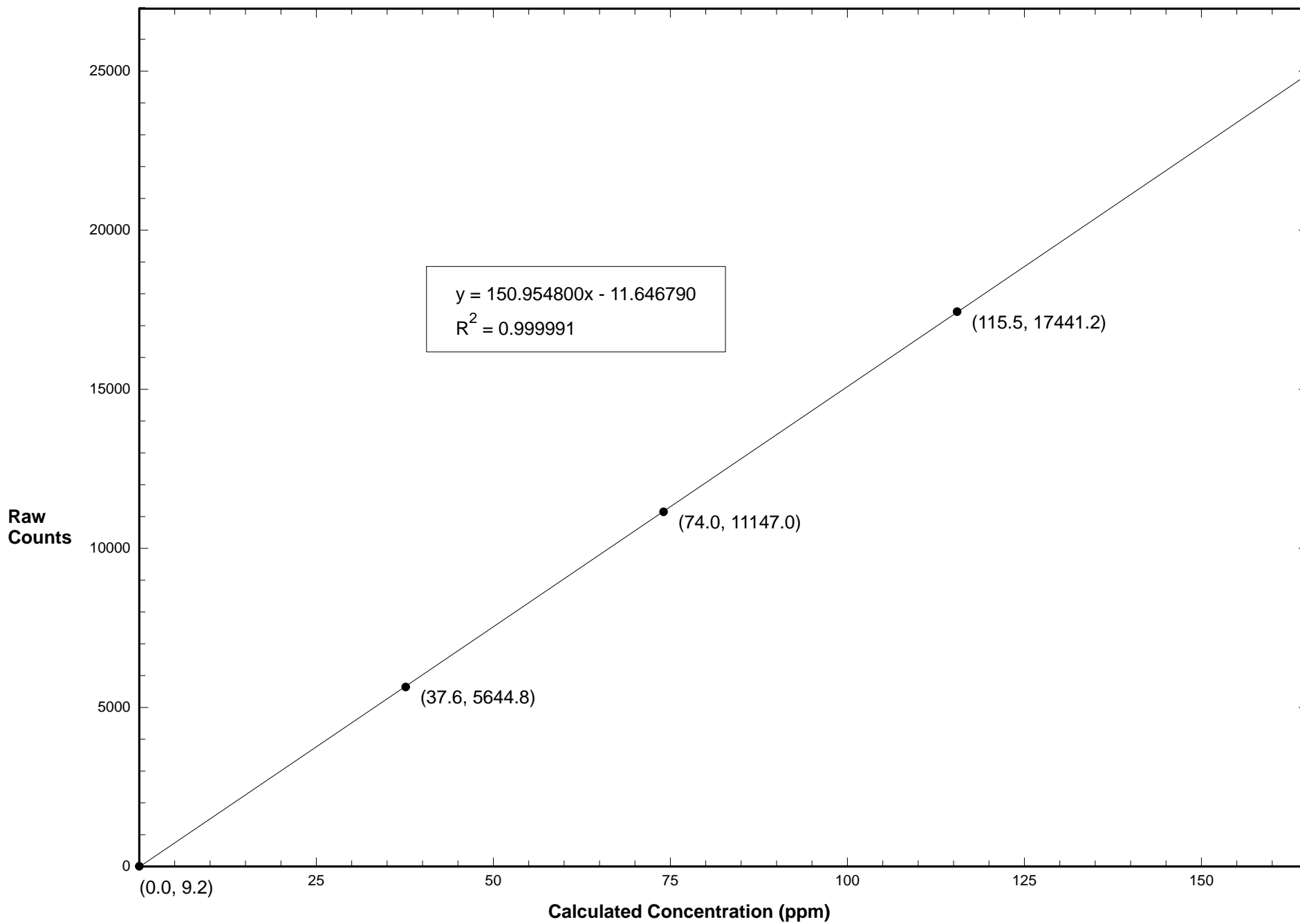
Final Zero: 0.1 ppm Final Span: 87.4 ppm As Found Correction Factor: 0.987

SO ₂ Flow Rate (LPM)	Dilution Flow Rate (LPM)	Calculated Concentration C _c (ppm)	Raw Count Output R _c	Indicated Concentration C _i (ppm)	Correction Factor C _c /C _i
0.0973	5.126	115.5	17441.2	115.6	0.999
0.0617	5.105	74.0	11147.0	73.9	1.002
0.0310	5.079	37.6	5644.8	37.5	1.004
0.0000	5.000	0.0	9.2	0.1	

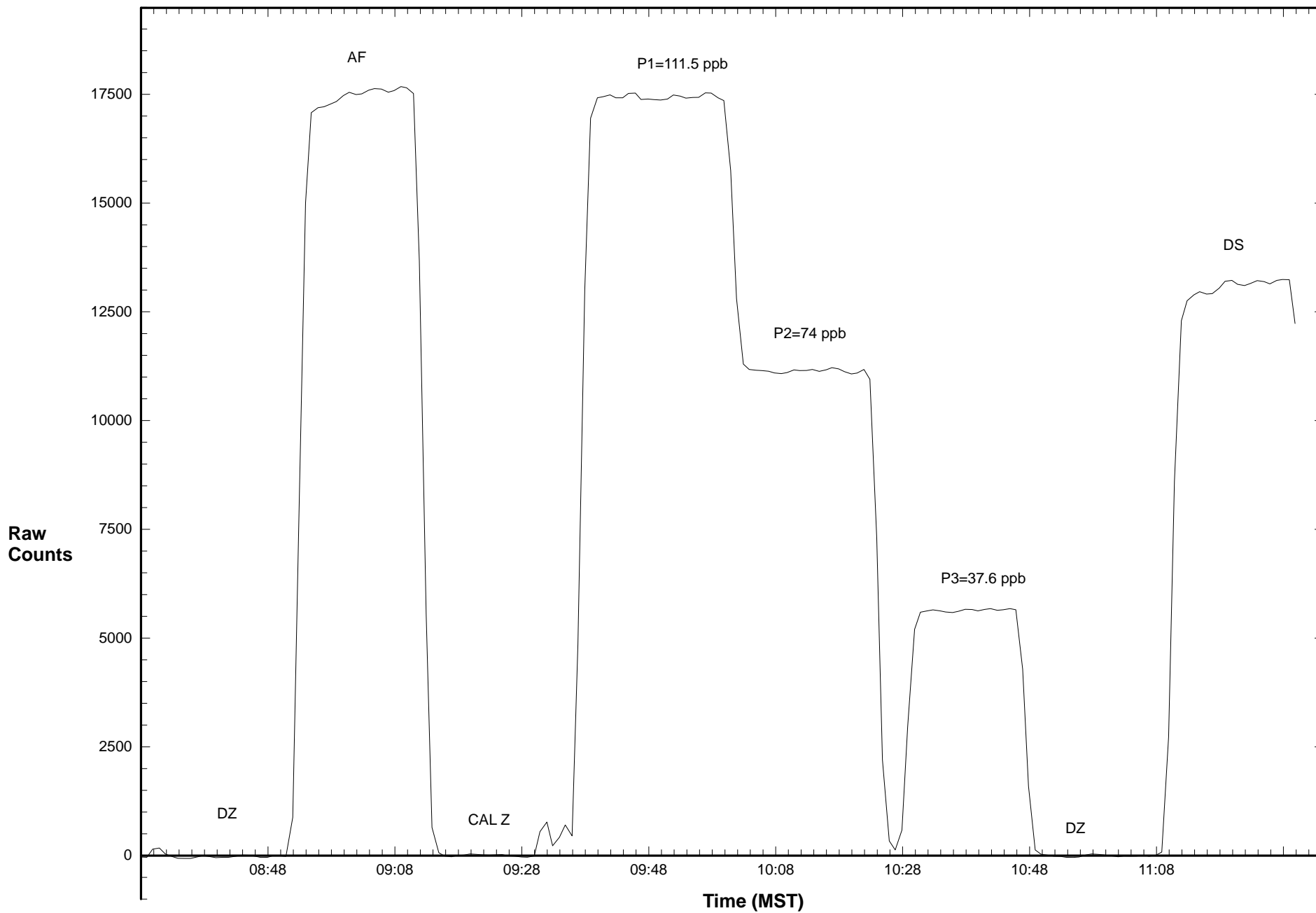
Results of Linear Regression				Average Correction Factor:	1.001
R _c vs C _c	Slope	Intercept	R ²	Previous Correction Factor:	1.001
Previous	150.306700	-17.135600	0.999986	Current Correction Factor:	0.999
Current	150.954800	-11.646790	0.999991	Percent Change of Correction Factor:	-0.2
C _i vs C _c					
Current	1.000000	0.000005	0.999991		

Comments:

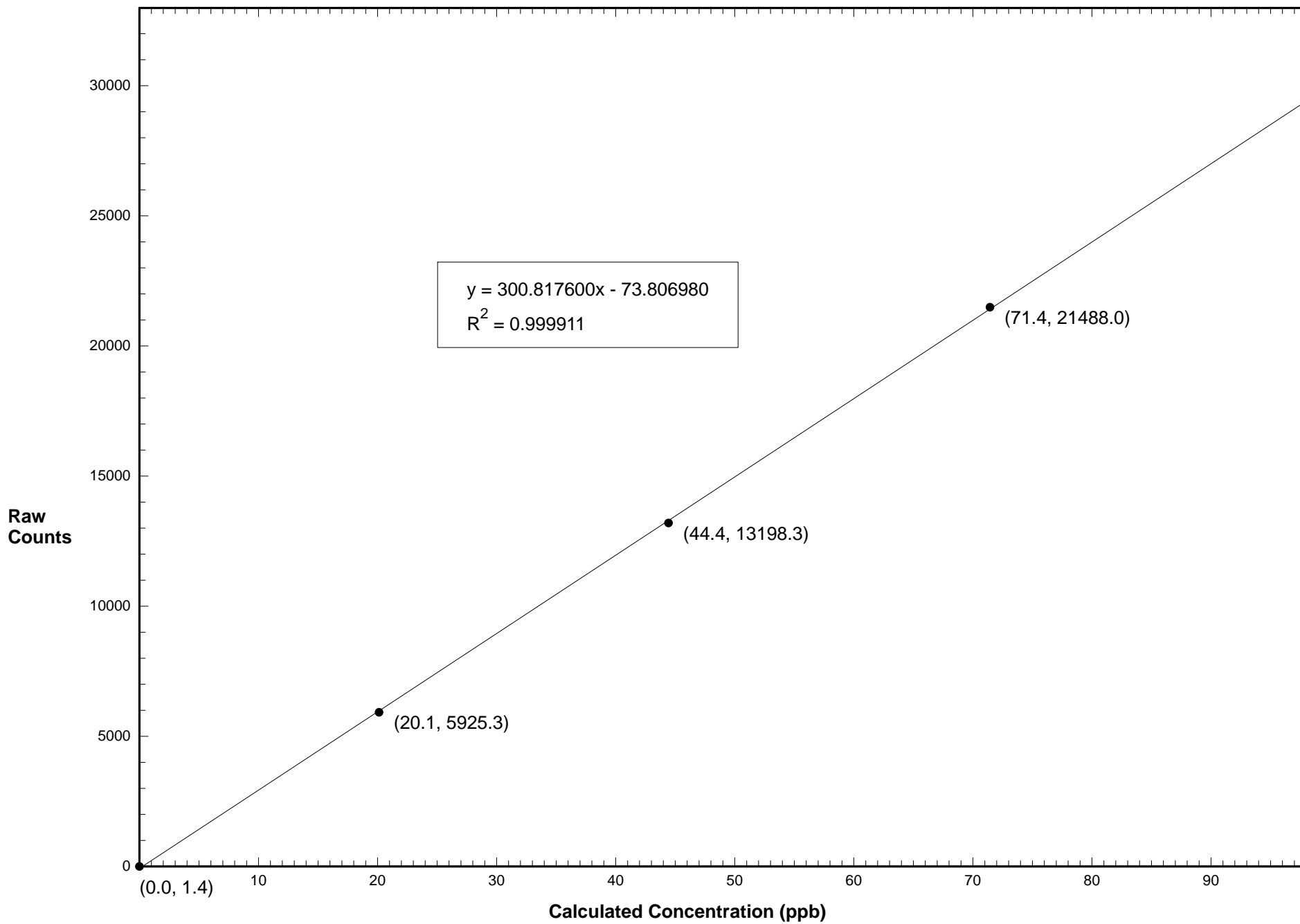
Station 906 SO2 April 15, 2015: Linear Regression



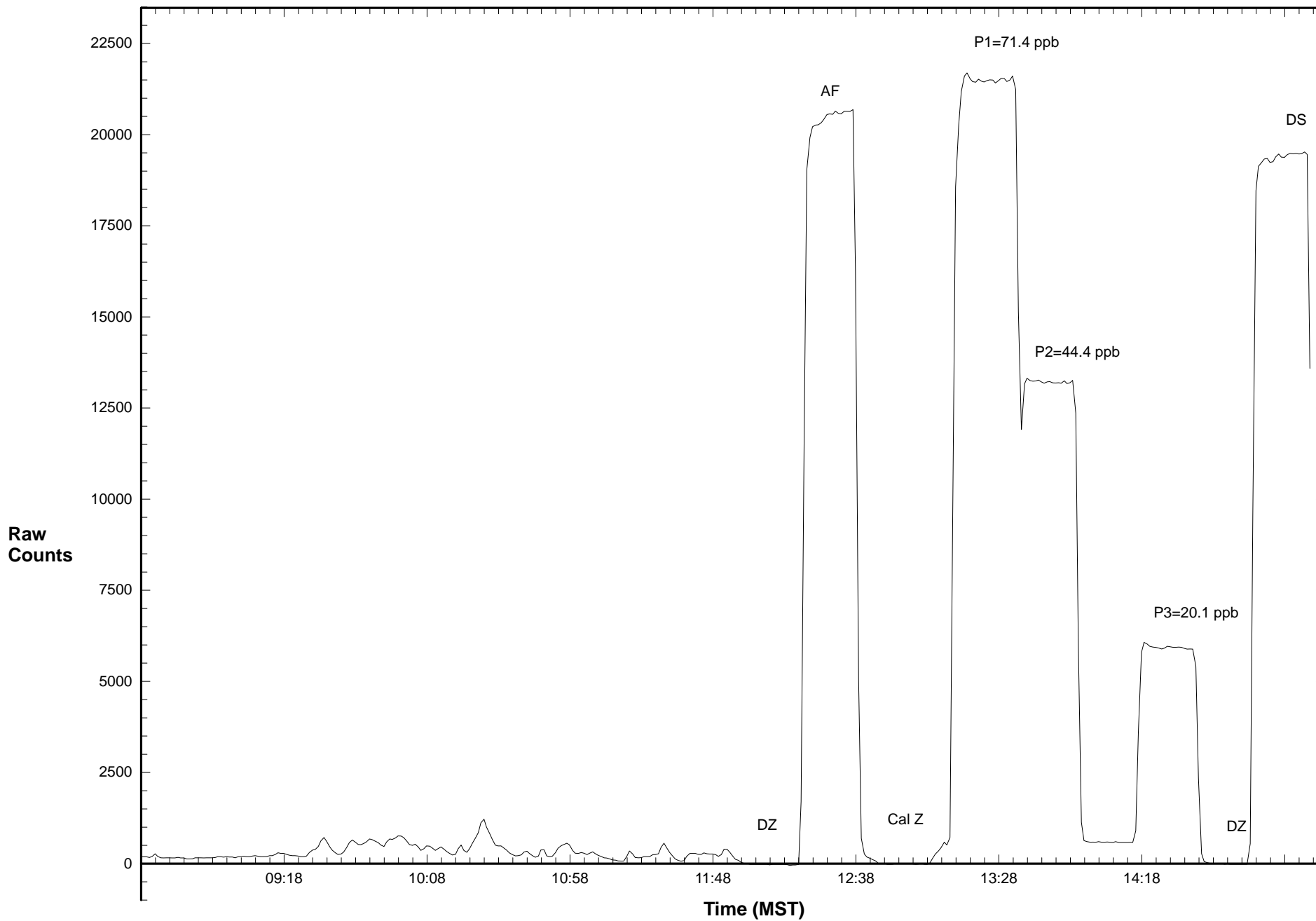
Station 906 SO2 April 15, 2015: Calibration Graph



Station 906 TRS April 15, 2015: Linear Regression



Station 906 TRS April 15, 2015: Calibration Graph



WEST CENTRAL AIRSHED SOCIETY

**CONTINUOUS AMBIENT AIR QUALITY
MONITORING PROGRAM
MONTHLY REPORT
METEOROLOGICAL DATA**

**AMS 906
HINTON
APRIL 2015**

Operations and Data Collection by:
West Central Airshed Society
Drayton Valley, Alberta

QA/QC, Data Validation and Reporting by:
West Central Airshed Society
Drayton Valley, Alberta



WCAS - Hinton
Summary of Hourly Averages

External Temperature (ET) - C
April 2015

Maximum Value: 22.47 C on Apr 28 14:00		Maximum Daily Average: 12.92 C on Apr 28		Hours in Service: 720																						
Minimum Value: -7.7 C on Apr 15 06:00		Minimum Daily Average: -0.47 C on Apr 5		Hours of Data: 720																						
Maximum Diurnal Average: 10.47 C at hour 17		Minimum Diurnal Average: -1.61 C at hour 6		Hours of Missing Data: 0																						
Monthly Average: 4.537 C		Percentiles: P ₁ = -6.1 P ₁₀ = -2.6 Q ₁ = -0.1 Median = 3.4 Q ₃ = 9.0 P ₉₀ = 13.3 P ₉₉ = 21.0		Hours of Calibration: 0																						
				Percent Operational Time: 100.0																						
Day	Hourly Period Ending At																								Daily Average	Daily Maximum
	1	2	3	4	5	6	7	8	9	10	11	12	13	14	15	16	17	18	19	20	21	22	23	24		
1-Apr	1.8	2.4	2.2	2.2	1.6	1.4	1.1	1.8	3.6	4.6	4.7	4.9	5.1	4.9	4.0	2.9	2.0	1.2	0.7	0.6	0.2	-0.3	-0.1	-1.1	2.19	5.10
2-Apr	-1.2	-1.6	-2.4	-2.6	-2.5	-2.9	-2.4	-2.0	-0.6	3.3	4.3	3.8	3.2	3.5	2.7	1.8	3.5	3.7	3.4	1.7	-0.6	-2.1	-2.9	-2.9	0.35	4.33
3-Apr	-3.2	-3.6	-3.5	-3.5	-3.7	-4.2	-4.4	-3.6	-1.1	2.8	5.4	6.7	7.5	8.2	8.9	8.6	8.1	7.5	6.1	4.5	4.4	2.9	2.0	1.6	2.27	8.86
4-Apr	0.7	0.6	0.5	0.3	0.1	0.0	-0.1	-0.4	-0.7	-0.4	-0.3	-0.3	0.4	1.0	1.5	1.6	1.4	1.1	0.8	0.0	-0.7	-0.8	-0.9	-1.0	0.19	1.62
5-Apr	-1.1	-1.2	-1.3	-1.5	-1.7	-1.9	-2.0	-1.8	-1.5	-1.0	-0.4	0.0	0.4	0.9	1.7	2.2	1.6	0.9	0.4	0.2	-0.4	-0.9	-1.2	-1.7	-0.47	2.18
6-Apr	-1.9	-1.9	-2.3	-2.4	-2.7	-2.8	-2.7	-2.5	-2.0	-1.1	-0.4	-0.2	0.4	1.3	2.9	4.8	5.0	4.7	4.1	2.7	0.9	-0.3	-2.2	-3.2	-0.08	5.00
7-Apr	-3.9	-4.4	-5.0	-5.2	-5.8	-6.3	-6.6	-4.2	0.2	3.4	5.8	7.2	8.3	9.0	9.0	9.4	11.0	10.0	7.7	4.9	2.9	0.3	-1.6	-2.2	1.82	10.97
8-Apr	-3.0	-3.8	-4.4	-5.2	-5.6	-5.7	-6.1	-3.6	1.2	4.9	7.4	8.9	10.3	11.2	12.3	12.8	13.0	13.0	11.7	9.2	6.7	3.6	0.7	-1.5	3.67	13.05
9-Apr	-2.4	-3.0	-3.2	-3.5	-3.1	-3.3	-2.6	0.1	4.5	7.3	10.1	12.5	13.4	14.4	15.5	15.7	16.3	15.8	14.2	12.2	10.3	7.3	4.5	2.2	6.46	16.31
10-Apr	0.6	-0.8	-1.8	-2.5	-3.3	-3.8	-4.0	-1.0	4.9	8.3	11.5	13.7	13.7	13.1	14.0	13.2	12.5	10.7	9.9	9.6	9.0	7.7	7.6	6.3	6.21	13.98
11-Apr	4.9	0.3	-1.1	-1.5	-1.9	-2.6	-3.0	-0.1	5.9	5.6	2.3	3.6	5.1	7.0	6.8	7.6	7.1	5.2	4.4	2.7	1.0	0.5	-0.3	-0.1	2.47	7.64
12-Apr	0.0	-1.2	-0.8	0.0	-0.4	-1.9	-2.0	0.5	2.5	3.0	1.9	3.5	4.0	3.9	4.0	4.2	4.9	5.2	3.8	1.9	-0.4	-0.8	-1.9	-2.3	1.32	5.18
13-Apr	-3.5	-4.7	-5.1	-5.8	-6.1	-6.3	-6.0	-4.1	-0.6	2.2	5.0	7.3	8.5	9.2	9.1	10.4	10.2	10.2	9.5	7.3	5.4	1.7	-0.6	-1.7	2.15	10.39
14-Apr	-2.6	-3.5	-4.0	-4.3	-3.8	0.7	2.1	1.6	0.7	2.1	3.9	4.2	5.2	5.9	6.4	7.7	9.2	9.2	7.2	4.7	1.3	0.2	-1.9	-3.2	2.04	9.24
15-Apr	-4.1	-5.2	-6.1	-7.0	-7.5	-7.7	-7.2	-3.7	2.7	6.5	7.7	8.9	11.0	12.0	11.5	11.8	12.3	11.9	10.2	9.6	8.7	7.6	6.9	5.9	4.03	12.34
16-Apr	4.9	5.5	5.0	5.3	3.1	-0.4	2.0	6.4	9.8	11.3	12.1	13.5	15.6	16.0	15.3	14.6	15.0	14.1	13.1	11.6	10.2	9.4	7.5	4.4	9.39	15.98
17-Apr	2.8	1.5	0.6	-0.3	-1.1	-2.0	-1.8	-0.3	1.7	3.9	7.2	13.9	14.9	14.3	12.7	14.5	15.2	13.8	11.3	8.6	6.8	6.2	4.8	3.5	6.36	15.19
18-Apr	1.3	-0.5	-1.9	-2.4	-2.9	-3.1	-3.6	-1.6	4.0	6.5	7.7	8.3	10.2	11.0	11.4	11.8	11.8	11.4	10.9	9.4	6.8	4.3	2.7	1.1	4.77	11.81
19-Apr	-0.7	-1.9	-1.9	-1.7	-1.5	-1.2	-1.0	0.7	4.3	7.7	9.2	10.6	11.9	13.0	14.7	15.4	16.4	17.1	16.1	13.8	10.7	7.7	3.9	1.8	6.87	17.07
20-Apr	0.2	-1.0	-1.9	-2.4	-2.6	-2.6	-1.1	1.3	7.6	10.3	11.7	14.1	15.7	16.7	16.8	16.7	17.0	16.9	16.4	14.4	12.5	10.8	9.1	7.6	8.51	17.00
21-Apr	5.7	3.4	2.0	0.9	0.0	-0.8	-0.3	4.0	8.7	12.1	15.2	18.4	20.0	21.2	21.6	20.8	20.0	19.7	19.5	18.0	13.8	9.3	6.6	5.0	11.02	21.59
22-Apr	3.4	2.5	2.0	2.6	3.4	3.2	3.3	5.5	8.7	11.3	12.2	12.1	6.6	6.4	7.1	9.2	9.2	8.2	7.7	6.0	4.7	4.2	3.8	2.4	6.07	12.21
23-Apr	1.6	0.9	0.7	0.7	0.6	0.9	2.0	3.8	5.9	7.0	7.0	8.7	9.0	10.0	10.7	10.1	9.8	9.9	8.6	6.5	5.0	4.4	3.9	2.9	5.44	10.66
24-Apr	2.5	1.9	1.9	1.8	1.4	1.0	1.0	1.1	1.2	1.4	2.2	2.8	3.4	4.0	4.3	3.9	3.4	2.7	1.5	0.6	0.2	0.3	0.3	0.2	1.87	4.29
25-Apr	0.2	0.2	0.1	0.1	0.0	0.1	0.2	0.6	0.8	1.4	1.8	1.7	2.9	3.3	3.4	4.1	3.8	3.2	2.6	2.1	1.3	1.0	0.5	-0.6	1.45	4.12
26-Apr	-1.7	-2.1	-2.7	-3.4	-4.1	-4.3	-3.9	-2.2	1.1	4.0	6.8	9.1	10.8	11.8	12.5	12.7	14.2	14.1	12.2	10.7	8.8	5.5	2.7	1.2	4.75	14.19
27-Apr	0.8	0.2	0.3	0.2	-0.3	-0.3	0.9	6.3	8.0	11.4	13.0	15.0	16.6	17.2	17.1	16.5	16.6	16.5	15.8	15.2	13.3	13.0	13.3	13.4	10.00	17.24
28-Apr	12.9	9.6	8.0	6.2	5.0	4.5	3.8	4.3	5.7	8.9	15.2	20.2	22.2	22.5	22.3	22.3	22.2	21.0	18.8	16.1	12.2	9.4	8.7	8.2	12.92	22.47
29-Apr	6.7	5.9	5.5	5.4	5.4	4.7	4.1	3.3	2.2	0.7	1.3	2.6	4.2	5.5	7.3	8.7	9.5	10.8	9.8	7.5	4.6	2.5	0.9	0.1	4.97	10.84
30-Apr	4.1	3.2	3.4	2.5	0.8	-0.7	0.2	2.0	6.6	9.9	10.5	11.2	12.2	11.8	12.6	12.2	11.8	10.9	10.2	9.6	8.9	7.8	5.4	3.8	7.11	12.63
																								Diurnal Average		
																								Diurnal Maximum		



WCAS - Hinton
Summary of Hourly Averages

Wind Speed (WS) - kph
April 2015

Day	Hourly Period Ending At (MST)																								Daily Average	Daily Maximum	
	1	2	3	4	5	6	7	8	9	10	11	12	13	14	15	16	17	18	19	20	21	22	23	24			
1 Spd	2.1	2.9	2.6	3.6	2.7	2.9	3.4	3.5	5.4	9.7	12.0	10.5	9.6	9.3	6.4	6.7	5.4	4.9	4.0	1.5	0.6	0.8	2.4	0.4	2.89	12.01	
Dir	W	W	W	W	W	W	WNW	W	WNW	WNW	NW	NW	NW	NW	N	NE	ENE	E	E	NE	N	W	SSW	SW	NW	NW	
2 Spd	1.4	1.1	0.8	1.1	1.8	1.4	3.1	1.0	1.0	4.1	2.2	3.6	6.7	1.9	2.6	4.3	3.3	2.5	1.2	1.4	1.3	0.9	0.1	0.7	1.00	6.66	
Dir	SW	WSW	WSW	WSW	WSW	SW	SW	W	NW	WSW	WSW	S	SW	W	NNE	SSE	ENE	SSE	NW	NE	WSW	SSW	NE	ENE	SW	SW	
3 Spd	0.3	0.6	1.6	0.6	1.2	0.4	0.5	0.4	1.1	0.4	4.0	3.9	3.4	5.2	3.3	4.2	4.2	3.3	2.9	1.5	2.3	1.9	3.8	6.3	0.19	6.28	
Dir	E	W	WSW	S	W	NNE	ENE	W	W	WNW	SW	SW	WSW	SW	W	ENE	NNE	NE	NE	NNE	ESE	ESE	NE	ENE	NNE	ENE	
4 Spd	2.7	3.7	5.7	5.7	5.8	4.4	4.7	4.7	4.0	5.4	6.1	5.2	6.4	6.4	4.8	6.6	7.1	5.6	5.9	6.1	4.8	3.6	3.7	3.5	5.05	7.10	
Dir	NE	ENE	ENE	ENE	ENE	ENE	ENE	NE	NNE	NE	NE	NE	ENE	NE	NE	NE	NE	NE	NE	NE	NE	NE	NE	NE	NE	NE	
5 Spd	2.8	3.0	4.3	5.3	4.8	5.0	4.8	4.8	3.6	4.6	4.2	5.3	5.7	3.9	3.6	7.5	5.0	4.2	4.8	5.2	4.1	2.9	2.9	2.7	4.29	7.53	
Dir	NNE	NNE	NE	NE	ENE	ENE	ENE	ENE	NE	NE	NE	NE	NE	NNE	NNE	ENE	NE	ENE	ENE	ENE	ENE	NE	NE	ENE	NE	ENE	
6 Spd	1.7	2.6	2.3	5.4	4.9	4.1	1.8	4.9	2.4	3.1	3.5	7.6	8.2	7.1	2.1	3.7	3.4	5.4	6.3	3.6	3.2	2.7	1.5	0.8	3.55	8.20	
Dir	E	ESE	E	ENE	ENE	ENE	NE	SSE	E	ENE	NE	ENE	ENE	ENE	ENE	E	NE	E	ENE	ENE	ENE	ENE	ENE	ENE	ENE	ENE	
7 Spd	0.3	0.6	1.7	1.1	1.5	1.9	1.2	1.9	2.4	3.2	8.9	10.1	7.3	8.7	4.4	4.2	5.3	3.8	4.3	0.7	3.7	4.9	2.6	1.9	3.19	10.14	
Dir	ENE	W	SW	WSW	SW	WSW	WSW	WNW	W	WSW	SW	SSW	SW	SSW	WSW	WSW	W	W	WNW	WNW	SSW	SSW	SSW	SSW	SW	SSW	
8 Spd	1.3	0.9	1.2	0.7	1.3	2.0	0.7	1.5	2.4	3.4	11.1	13.7	9.5	8.9	9.4	10.9	11.7	7.1	7.8	3.9	2.6	2.5	2.7	0.6	4.69	13.65	
Dir	SW	S	SW	W	WSW	WSW	SW	WNW	WNW	WSW	SSW	SSW	SSW	SSW	SW	SW	SW	SW	SW	SW	SW	WSW	W	S	SW	SSW	
9 Spd	0.2	0.5	1.0	0.6	2.0	2.1	2.8	3.3	4.1	4.9	8.9	9.3	8.9	7.8	6.8	8.8	7.6	8.3	5.9	7.4	6.1	2.3	1.6	0.7	4.26	9.29	
Dir	NE	E	SSW	W	WNW	WNW	WNW	W	WSW	WSW	SW	SW	SSW	SW	SW	SSW	SW	SW	SW	SW	SW	WSW	WNW	ESE	SW	SW	
10 Spd	0.8	0.8	1.2	1.2	1.0	0.7	0.8	0.5	0.6	1.6	2.7	5.9	10.5	11.2	5.4	5.3	6.4	7.1	5.9	5.8	7.2	5.2	9.9	3.2	3.34	11.23	
Dir	SE	ESE	E	E	ENE	E	E	NE	NE	WNW	WSW	WSW	SW	SW	WSW	W	WSW	WSW	WSW	SW	SW	SSW	S	S	SW	SW	
11 Spd	2.1	1.0	3.4	1.4	3.2	2.6	1.6	0.2	7.1	7.3	3.2	3.2	6.1	10.6	9.1	7.6	7.2	13.9	7.8	4.0	2.3	2.3	2.8	5.8	2.68	13.90	
Dir	S	NE	ENE	NE	ENE	ENE	ENE	SE	SW	WNW	NE	S	SSW	NW	WNW	WNW	WSW	SW	SW	WNW	WNW	WSW	WSW	SW	WSW	SW	
12 Spd	2.2	0.8	5.2	8.9	7.4	7.8	6.1	9.7	7.9	8.0	9.9	6.6	9.0	9.7	10.4	9.1	6.2	8.3	5.5	3.1	1.6	3.8	2.3	4.1	5.57	10.44	
Dir	WSW	WSW	SW	SW	SW	SW	SW	SW	WSW	WSW	SW	WSW	WNW	WNW	WNW	WNW	W	WNW	W	W	WSW	SW	WSW	SW	WSW	WNW	
13 Spd	1.9	0.5	1.6	0.5	1.1	0.9	1.2	1.9	2.0	0.5	1.2	2.1	7.7	4.7	7.8	4.6	6.1	7.2	7.8	1.3	1.5	0.9	1.2	1.4	2.04	7.77	
Dir	WSW	SSW	SW	ENE	ENE	E	ENE	ENE	ENE	WNW	W	W	SSW	SW	SSW	SSW	SSW	SSW	SSW	WSW	SW	ESE	SSW	SSE	SSW	SSW	
14 Spd	0.8	0.5	0.6	0.9	0.1	3.2	0.9	2.0	7.8	7.9	4.7	7.7	10.5	9.8	10.0	4.6	5.9	5.6	6.0	5.1	1.0	1.6	1.3	0.9	3.21	10.47	
Dir	E	NE	SW	SE	ESE	S	ENE	W	SSW	SW	WSW	SW	SW	SW	SW	WNW	WNW	WNW	WNW	WNW	WSW	SW	SW	ESE	WSW	SW	
15 Spd	0.6	0.3	0.3	0.6	0.5	0.9	0.6	2.1	3.8	10.1	11.7	12.6	7.5	7.3	14.3	13.3	12.5	9.7	10.8	9.8	7.6	5.1	4.3	3.2	5.73	14.26	
Dir	WSW	NNW	ENE	NE	ENE	ENE	E	ENE	W	WSW	SW	SW	WSW	WSW	SW	SW	SW	SW	SW	SW	SW	WSW	WSW	WSW	SW	SW	
16 Spd	2.9	6.4	6.7	7.4	3.3	2.2	1.6	3.0	7.2	4.9	12.5	16.2	11.8	5.9	8.1	5.9	4.8	4.1	3.2	1.6	1.9	2.7	1.8	1.7	4.18	16.22	
Dir	SW	SW	SW	SW	SSW	E	S	SSW	WSW	WSW	SW	SW	SW	WSW	SW	WSW	W	W	W	NW	ENE	NE	E	ENE	SW	SW	
17 Spd	1.6	1.0	1.4	1.6	0.6	0.4	0.7	3.0	2.4	3.9	2.8	6.3	6.5	7.2	8.4	6.8	5.6	8.2	8.4	7.3	5.3	8.7	4.8	1.3	2.69	8.72	
Dir	E	ENE	NNE	ENE	E	N	NNE	ENE	NE	NE	ENE	W	W	W	WNW	W	W	WNW	WNW	SW	NW	NNW	NW	WSW	WNW	NNW	
18 Spd	3.0	1.6	1.8	1.7	2.1	2.6	1.6	1.8	4.1	7.1	5.7	3.8	3.5	5.2	3.5	3.0	1.9	1.8	0.5	2.1	3.2	2.1	2.9	1.9	1.12	7.07	
Dir	S	S	SW	SSW	W	SW	W	W	WNW	NW	NW	NNW	N	N	N	WNW	SSW	N	NNW	ENE	ENE	E	E	NE	NW	NW	
19 Spd	0.3	0.7	0.8	0.5	0.3	1.6	0.2	1.2	2.4	2.4	4.9	6.0	5.6	8.2	5.9	11.5	7.1	4.8	3.6	3.1	2.2	0.9	1.1	0.6	2.83	11.48	
Dir	NE	ENE	W	E	N	WSW	WNW	WNW	W	SSW	SW	SSW	SSW	SSW	SW	SSW	SSW	SW	WSW	WSW	SW	S	SSW	W	SW	SSW	
20 Spd	0.8	0.9	0.4	0.2	1.0	0.6	0.4	1.3	3.6	6.2	9.6	11.9	7.0	2.7	5.5	4.4	2.2	0.9	0.8	1.4	0.5	2.3	1.4	0.4	2.30	11.91	
Dir	WSW	W	WNW	SW	W	WSW	NW	WNW	W	SW	SSW	SSW	S	SSW	SSW	SW	WSW	NW	SE	ENE	S	SW	SSW	ESE	SW	SSW	
21 Spd	0.4	0.6	1.4	1.5	2.6	1.7	1.2	1.0	2.4	3.4	3.1	3.1	4.9	7.9	7.0	10.6	10.3	9.7	3.6	4.6	1.0	1.0	0.4	1.4	2.20	10.60	
Dir	SSW	WSW	WSW	WSW	W	WSW	W	WSW	WNW	W	NW	W	SSW	SW	SW	SSE	SSE	SE	SE	SW	SSW	SW	ENE	NNE	E	SSW	SSE
22 Spd	0.8	0.7	0.3	0.1	1.7	0.6	1.5	2.0	0.7	1.0	1.8	5.5	5.1	1.4	3.0	3.9	3.9	5.6	4.6	3.3	1.8	1.2	1.3	0.6	0.96	5.60	
Dir	E	ENE	ENE	E	ENE	NW	ESE	ENE	E	NNW	ESE	WSW	SW	ESE	ENE	NE	NNW	NE	NE	NNE	NE	ENE	ENE	SSW	NE	NE	



WCAS - Hinton
Summary of Hourly Averages

Wind Speed (WS) - kph
April 2015

Day	Hourly Period Ending At (MST)																								Daily Average	Daily Maximum
	1	2	3	4	5	6	7	8	9	10	11	12	13	14	15	16	17	18	19	20	21	22	23	24		
23 Spd	0.9	0.7	0.3	0.7	0.2	0.5	1.6	4.1	3.9	8.1	8.8	4.5	3.0	3.6	1.9	3.9	3.6	2.1	7.3	3.7	1.7	7.1	4.9	3.0	0.53	8.85
Dir	S	SSE	ESE	SW	SW	W	WNW	WNW	W	SW	SW	W	WNW	WNW	W	NNE	ENE	NNE	ENE	ENE	ENE	ENE	ENE	NNE	NNW	SW
24 Spd	3.8	2.6	4.0	4.0	6.7	7.0	5.1	3.8	4.0	3.4	4.5	8.5	7.0	6.7	8.3	8.2	5.7	5.7	4.3	0.8	0.5	1.7	0.2	1.4	4.40	8.53
Dir	ENE	NE	ENE	NE	ENE	ENE	NE	NE	NE	NNE	NNE	ENE	NE	NE	NE	ENE	ENE	ENE	ENE	ENE	ENE	NE	NNE	ENE	NE	ENE
25 Spd	4.2	2.6	2.6	3.3	2.3	2.7	0.8	0.5	1.3	5.1	5.9	4.7	7.6	7.1	6.1	8.2	8.5	8.2	6.7	5.2	3.5	3.6	2.2	1.5	4.31	8.51
Dir	ENE	NE	NE	ENE	ENE	ENE	ENE	E	ENE	ENE	NE	NE	ENE	ENE	NE	NE	ENE	NE	NE	NE	NE	NE	NE	ENE	NE	ENE
26 Spd	1.1	1.7	0.5	0.7	0.7	1.3	2.2	1.6	1.7	1.6	3.5	4.0	2.1	2.9	0.4	3.2	1.3	5.1	4.1	4.5	3.9	2.1	0.9	1.0	0.35	5.10
Dir	NE	E	ENE	ENE	ENE	ENE	E	NE	NE	NNW	N	N	ENE	ESE	ENE	NE	NNE	WSW	W	WSW	SSW	WSW	E	ENE	N	WSW
27 Spd	2.5	2.5	1.9	3.4	3.9	3.1	2.5	2.2	0.9	1.3	6.4	9.1	5.5	6.6	8.9	9.8	10.8	11.2	14.0	11.4	3.6	2.8	6.8	8.9	4.11	13.96
Dir	ENE	ENE	NE	ENE	ENE	ENE	ENE	SW	SE	WNW	SW	SSW	WSW	WSW	SW	SW	SW	SW	SW	SW	WSW	SSW	SSW	SW	SW	SW
28 Spd	1.7	1.2	0.9	1.9	3.0	2.6	0.6	1.5	1.5	4.5	5.2	1.8	8.1	6.0	8.4	8.5	6.5	6.9	8.0	1.5	5.2	4.5	2.2	2.6	0.99	8.47
Dir	WSW	ENE	ESE	ENE	ENE	ENE	ENE	ENE	NE	ENE	NE	NNE	SW	WSW	WSW	WSW	WSW	WSW	SW	WNW	NNE	N	NE	NNE	W	WSW
29 Spd	1.9	3.4	0.7	1.0	0.6	1.2	0.9	2.9	2.0	2.6	5.0	7.7	3.7	3.7	3.7	4.5	5.9	3.5	3.1	7.1	4.2	0.4	1.0	1.0	2.19	7.65
Dir	N	ESE	WNW	SSW	NNE	N	W	SW	SSW	SW	SW	SSW	W	W	SW	WSW	WSW	W	WNW	WSW	WSW	NE	SW	E	WSW	SSW
30 Spd	8.0	7.3	6.8	3.6	1.8	1.1	1.7	3.1	1.1	10.4	7.1	9.8	6.8	6.6	5.4	6.7	3.9	11.3	10.1	4.4	6.4	2.3	2.1	2.3	4.17	11.26
Dir	SW	SSW	SSW	SSW	SSE	ESE	ENE	ENE	S	SW	WSW	WSW	WSW	W	WSW	WNW	W	SW	SW	WSW	SW	SW	NE	ENE	SW	SW
Spd	0.27	0.43	0.32	0.36	0.54	0.46	0.34	0.28	1.39	2.25	2.80	3.80	3.46	2.93	3.04	1.90	2.00	2.29	2.02	1.47	0.78	0.21	0.30	0.46	Diurnal Average	
Dir	SSE	SE	S	ESE	ENE	ENE	NE	WNW	W	W	WSW	SW	SW	WSW	WSW	WSW	WSW	SW	WSW	WSW	SW	W	S	SE	Diurnal Maximum	
Spd	8.03	7.31	6.75	8.90	7.37	7.79	6.12	9.71	7.94	10.39	12.47	16.22	11.85	11.23	14.26	13.27	12.51	13.90	13.96	11.38	7.55	8.72	9.91	8.92	Diurnal Maximum	
Dir	218.19	204.05	210.45	221.65	226.38	229.23	230.82	228.76	249.28	233.04	231.48	226.02	229.93	218.12	227.81	219.26	228.23	222.44	218.71	224.67	227.78	327.62	190.80	218.31	Diurnal Maximum	
Maximum Speed Value: 16.2 kph on Apr 16 12:00		Minimum Speed Value: 0.1 kph on Apr 2 23:00										Hours in Service: 720														
Maximum Daily Speed Average: 5.73 kph on Apr 12		Minimum Daily Speed Average: 0.19 kph on Apr 2										Hours of Data: 720														
Maximum Diurnal Speed Average: 3.80 kph at hour 12		Minimum Diurnal Speed Average: 0.21 kph at hour 22										Hours of Missing Data: 0														
Monthly Average Velocity: 1.192 kph 239.36 deg		Speed Percentiles: P ₁ = 0.2 P ₁₀ = 0.7 Q ₁ = 1.5 Median = 3.4 Q ₃ = 5.9 P ₉₀ = 8.4 P ₉₉ = 12.2										Percent Operational Time: 100.0														
All monthly, daily, and diurnal averages have been calculated using vector methods																										
Frequency Distribution																										
	Speed Range (kph)																									
Direction	0 to 5	5 to 11	11 to 19	19 to 28	28 to 38	> 38	Total																			
North	24	2	0	0	0	0	26																			
NorthEast	128	50	0	0	0	0	178																			
East	78	2	0	0	0	0	80																			
SouthEast	22	2	0	0	0	0	24																			
South	26	7	1	0	0	0	34																			
SouthWest	93	103	18	0	0	0	214																			
West	94	32	0	0	0	0	126																			
NorthWest	21	16	1	0	0	0	38																			
Total	486	214	20	0	0	0	720																			



WCAS - Hinton
Summary of Hourly Averages

Relative Humidity (RH) - %
April 2015

Maximum Value: 91.68 % on Apr 25 04:00 Maximum Daily Average: 85.62 % on Apr 24																							Hours in Service: 720			
Minimum Value: 9.0 % on Apr 9 16:00 Minimum Daily Average: 32.62 % on Apr 16																							Hours of Data: 720			
Maximum Diurnal Average: 76.34 % at hour 6 Minimum Diurnal Average: 32.52 % at hour 17																							Hours of Missing Data: 0			
Monthly Average: 52.813 % Percentiles: P₁ = 10.2 P₁₀ = 18.9 Q₁ = 28.2 Median = 54.5 Q₃ = 74.9 P₉₀ = 85.1 P₉₉ = 91.4																							Hours of Calibration: 0			
																							Percent Operational Time: 100.0			
Day	Hourly Period Ending At																								Daily Average	Daily Maximum
	1	2	3	4	5	6	7	8	9	10	11	12	13	14	15	16	17	18	19	20	21	22	23	24		
1-Apr	42.7	36.3	37.6	35.6	39.5	39.4	39.1	36.7	27.2	23.2	23.1	23.4	25.5	28.1	44.9	62.9	74.8	80.5	84.4	82.6	85.0	87.8	88.6	88.5	51.56	88.63
2-Apr	89.5	89.9	90.3	90.6	90.3	90.0	85.2	84.7	78.4	54.5	40.4	43.6	50.7	50.1	58.3	67.4	53.8	48.3	50.0	61.0	68.7	75.8	79.9	80.2	69.65	90.56
3-Apr	81.3	83.5	84.8	84.9	85.1	86.4	87.7	86.8	75.8	55.0	37.7	27.9	25.9	24.3	22.9	24.1	26.7	29.1	36.3	43.3	45.2	61.6	66.5	65.3	56.16	87.65
4-Apr	68.5	70.9	73.2	74.7	75.9	76.9	76.9	80.5	83.5	82.9	82.0	85.3	79.4	74.0	70.1	66.8	68.3	70.5	71.5	77.1	82.8	84.3	84.0	83.5	76.81	85.26
5-Apr	83.9	81.8	81.8	84.4	86.3	88.2	89.1	88.8	87.9	84.5	81.3	76.7	73.4	69.1	64.0	65.1	72.4	73.5	78.1	73.9	77.2	77.8	77.0	77.8	78.91	89.10
6-Apr	77.1	76.1	77.0	76.9	78.2	78.9	78.5	74.7	70.5	65.7	64.5	66.7	64.0	58.3	50.0	40.9	40.1	38.1	40.3	45.6	53.4	58.2	66.6	73.0	63.06	78.89
7-Apr	76.3	79.6	82.0	81.8	83.4	85.3	86.4	84.8	65.7	48.4	31.4	23.4	20.1	18.1	16.9	13.8	10.1	11.8	18.0	23.8	28.4	36.9	46.2	53.2	46.90	86.41
8-Apr	56.4	63.1	65.9	69.4	72.8	74.0	75.7	70.7	49.8	34.1	22.8	19.3	17.9	16.9	15.5	14.3	13.4	14.5	15.8	21.6	25.8	38.1	51.3	60.7	40.82	75.71
9-Apr	65.2	68.9	68.4	69.6	67.2	67.5	64.8	55.4	37.5	27.8	20.9	15.6	11.2	10.0	9.7	9.0	9.0	9.1	13.1	16.2	19.4	27.8	36.4	45.3	35.20	69.58
10-Apr	51.9	58.5	63.3	67.4	70.7	73.3	75.6	65.8	44.4	31.0	23.7	19.1	15.6	15.5	17.0	19.4	20.1	24.0	27.3	27.4	28.5	31.9	33.6	39.2	39.34	75.64
11-Apr	46.2	62.6	69.7	71.6	74.4	77.4	79.1	70.8	41.2	42.2	62.7	46.8	37.9	19.1	15.9	14.0	15.2	24.3	27.0	33.7	43.8	47.7	51.8	51.1	46.93	79.13
12-Apr	49.2	54.8	54.2	50.1	51.4	70.2	69.6	46.4	32.3	32.8	42.6	35.1	27.2	25.5	23.5	23.1	22.8	20.2	25.6	32.2	40.4	40.3	48.7	50.9	40.38	70.18
13-Apr	58.5	63.4	64.8	68.4	70.4	73.1	73.6	66.1	51.8	42.9	34.3	22.8	18.8	19.2	19.5	19.0	18.9	18.9	20.9	28.7	32.9	47.2	55.6	58.4	43.68	73.60
14-Apr	64.4	68.8	69.4	72.2	74.5	59.2	54.2	60.8	75.8	70.5	59.8	53.7	45.6	38.7	33.0	23.9	17.0	15.7	17.9	22.2	33.4	36.4	44.5	53.8	48.55	75.84
15-Apr	57.4	61.9	67.0	70.1	74.1	75.7	75.2	63.2	36.2	19.6	17.5	16.5	15.5	15.0	15.3	15.8	16.5	18.1	20.7	21.7	23.7	27.2	29.2	33.0	36.92	75.65
16-Apr	36.2	34.5	36.5	36.3	44.4	59.4	53.2	39.4	28.8	26.8	23.8	21.3	18.4	18.4	19.2	20.4	20.1	21.8	25.0	28.7	33.0	37.8	45.0	54.6	32.62	59.43
17-Apr	59.6	64.8	68.5	70.9	73.9	77.1	78.9	73.9	67.1	60.4	50.6	32.8	28.0	31.2	37.7	27.0	20.0	20.6	26.9	42.0	42.0	35.4	37.2	39.9	48.61	78.87
18-Apr	49.9	56.8	62.7	65.0	70.1	71.2	73.4	65.6	37.9	24.7	21.1	18.5	12.8	10.3	10.5	11.2	10.2	12.4	12.2	16.7	24.7	32.7	38.3	44.4	35.56	73.35
19-Apr	53.5	58.9	62.9	63.1	63.5	62.2	64.3	57.2	42.9	29.8	24.9	21.4	19.8	18.5	16.8	15.7	14.4	13.4	14.2	18.0	23.5	32.7	45.7	56.1	37.22	64.29
20-Apr	63.6	69.2	72.9	75.2	76.9	78.3	76.4	68.5	43.0	33.8	29.0	26.5	25.2	24.5	25.7	27.0	26.3	27.0	28.6	38.1	47.0	51.3	54.8	60.9	47.91	78.28
21-Apr	69.2	76.3	82.1	85.1	87.1	88.2	88.9	76.9	54.3	42.4	32.5	24.0	18.6	15.1	14.7	16.5	18.4	19.8	18.6	20.3	30.9	48.2	58.2	65.1	47.97	88.88
22-Apr	69.4	72.2	73.7	74.0	72.6	73.9	75.1	67.3	54.5	49.7	50.5	51.7	84.1	88.1	87.3	74.0	69.0	66.6	64.0	64.7	64.8	68.1	68.8	76.0	69.17	88.10
23-Apr	80.2	82.8	84.5	83.9	78.6	73.6	62.7	49.0	38.5	31.7	29.7	28.0	27.1	25.3	23.7	27.8	26.8	26.7	40.4	52.3	59.5	64.7	72.1	83.1	52.19	84.50
24-Apr	84.5	87.4	87.2	86.5	87.1	87.6	88.0	87.9	87.8	88.5	85.7	79.2	78.9	80.9	78.1	74.9	79.9	83.6	87.5	89.4	90.4	91.1	91.2	91.5	85.62	91.47
25-Apr	91.7	91.6	91.6	91.7	91.7	91.6	91.4	91.1	90.7	88.8	83.6	86.2	77.3	79.5	78.5	69.9	69.1	71.8	73.1	77.7	80.5	81.6	80.7	83.7	83.55	91.68
26-Apr	88.0	89.3	89.5	89.8	90.8	91.1	91.2	90.7	78.6	61.6	53.7	42.7	34.9	29.8	24.7	23.6	20.1	17.2	21.8	23.9	27.9	41.7	57.7	66.0	56.11	91.24
27-Apr	70.0	73.5	73.4	75.3	77.6	77.9	74.9	54.3	55.0	36.6	28.3	23.3	21.8	21.6	21.8	23.2	23.4	24.7	25.5	27.2	34.4	34.8	33.3	33.4	43.55	77.92
28-Apr	36.0	48.2	56.2	64.8	69.7	71.6	75.5	75.0	71.2	59.6	39.1	23.7	17.0	16.8	16.4	16.0	16.6	18.9	21.8	29.3	45.4	53.2	54.1	57.8	43.91	75.54
29-Apr	77.4	84.1	86.5	88.5	89.1	89.5	89.7	88.4	88.1	89.8	90.3	85.4	82.3	73.6	68.4	57.0	53.7	44.1	44.2	52.8	66.4	76.5	82.3	86.7	76.44	90.32
30-Apr	60.3	66.9	63.9	66.9	74.2	81.9	81.2	72.8	52.3	34.9	34.4	30.9	33.0	32.9	29.3	28.9	28.3	27.0	30.2	35.7	41.9	49.2	58.0	63.7	49.11	81.86
																							Diurnal Average			
																							Diurnal Maximum			



WCAS - Hinton
Summary of Hourly Standard Deviations

Wind Direction (WD) - deg
April 2015

Maximum Value: 107.60 deg on Apr 19 01:00		Maximum Daily Average: 66.68 deg on Apr 22		Hours in Service: 720																																													
Minimum Value: 12.9 deg on Apr 10 23:00		Minimum Daily Average: 32.33 deg on Apr 4		Hours of Data: 720																																													
Maximum Diurnal Average: 58.66 deg at hour 2		Minimum Diurnal Average: 39.34 deg at hour 19		Hours of Missing Data: 0																																													
Monthly Average: 49.319 deg		Percentiles: P ₁ = 18.3 P ₁₀ = 27.0 Q ₁ = 34.9 Median = 44.9 Q ₃ = 59.2 P ₉₀ = 80.6 P ₉₉ = 101.0		Hours of Calibration: 0																																													
				Percent Operational Time: 100.0																																													
Day	Hourly Period Ending At																								Daily Average	Daily Maximum																							
	1	2	3	4	5	6	7	8	9	10	11	12	13	14	15	16	17	18	19	20	21	22	23	24																									
1-Apr	30.1	43.6	46.8	51.1	36.3	39.5	31.7	37.7	35.8	28.0	24.1	26.5	30.9	31.5	44.0	40.6	39.4	29.5	27.1	45.0	54.5	39.0	23.6	73.3	37.90	73.33																							
2-Apr	44.9	25.2	27.8	38.0	32.9	33.6	38.3	44.0	63.1	51.7	87.1	91.6	46.1	79.8	65.4	40.2	61.4	79.5	54.4	55.4	90.0	86.7	76.8	68.4	57.59	91.59																							
3-Apr	67.8	76.6	39.7	89.9	30.6	62.1	66.2	78.8	76.4	90.2	63.0	68.7	63.1	54.3	64.6	43.6	42.0	74.3	60.5	81.5	80.6	41.6	20.6	61.89	90.20																								
4-Apr	47.8	30.7	21.1	20.7	18.3	23.0	23.0	30.6	36.9	38.5	36.4	39.2	30.3	32.9	37.6	32.5	34.9	37.7	28.8	28.1	30.1	44.3	38.6	33.7	32.33	47.79																							
5-Apr	42.3	45.2	34.5	25.7	23.1	21.8	22.3	26.6	39.3	34.9	36.4	32.4	37.7	43.2	43.2	30.5	38.3	33.6	38.5	23.7	31.1	46.1	46.3	39.2	34.83	46.34																							
6-Apr	52.2	34.5	31.7	22.5	26.8	19.6	25.9	43.6	60.1	37.0	61.3	25.6	30.1	35.8	87.7	59.4	49.5	40.2	27.0	31.6	50.1	38.1	34.2	43.6	40.34	87.70																							
7-Apr	47.5	54.9	36.4	32.5	30.4	16.1	34.0	26.9	37.6	52.1	27.6	36.9	46.4	40.8	60.5	49.4	52.0	48.7	23.4	43.5	29.8	29.0	25.1	39.1	38.35	60.54																							
8-Apr	31.0	72.7	31.5	36.9	35.2	25.4	55.8	28.5	35.1	47.2	25.2	25.3	41.5	35.7	37.5	35.0	27.4	47.2	31.5	41.8	27.4	38.9	24.2	86.7	38.53	86.69																							
9-Apr	71.4	64.2	77.7	75.0	45.6	21.4	22.5	39.0	46.9	49.6	32.5	37.2	33.3	39.4	46.2	33.4	41.9	37.1	43.0	30.4	29.6	36.3	25.7	54.2	43.07	77.72																							
10-Apr	56.0	80.5	53.5	51.5	58.7	43.0	53.5	59.4	68.1	77.2	55.5	49.1	43.0	38.2	51.9	51.3	51.1	52.3	49.3	48.9	31.2	40.9	12.9	46.6	51.00	80.52																							
11-Apr	80.5	63.6	37.5	94.0	46.4	60.0	75.5	94.9	77.2	53.0	60.9	57.8	56.3	24.4	32.4	38.7	46.7	24.3	38.3	36.5	46.9	43.6	40.8	28.7	52.45	94.87																							
12-Apr	58.5	87.1	42.5	28.0	28.4	41.0	31.9	28.8	50.0	49.7	39.9	46.7	43.4	27.2	26.4	32.9	49.1	35.6	48.3	43.7	46.2	29.5	30.3	26.1	40.47	87.12																							
13-Apr	34.1	87.7	48.3	72.7	64.8	79.8	57.0	38.9	40.3	99.8	82.3	76.8	49.8	66.1	64.1	74.5	50.7	34.3	38.8	48.4	60.4	66.9	78.6	78.6	62.23	99.76																							
14-Apr	69.5	80.8	84.0	64.1	95.2	101.4	102.8	87.2	31.0	32.8	50.3	29.4	24.3	26.8	29.8	55.3	39.2	40.2	28.1	22.9	40.1	82.0	73.3	86.1	57.35	102.79																							
15-Apr	83.3	92.3	86.8	67.3	55.3	43.5	71.9	44.5	69.3	42.1	35.6	32.8	52.9	52.9	35.1	32.5	36.7	40.6	28.7	27.5	34.0	43.2	43.2	37.1	49.54	92.28																							
16-Apr	28.5	16.9	15.6	18.6	64.1	46.0	37.2	78.3	44.6	55.9	37.7	31.7	39.1	51.1	45.0	50.8	50.6	53.9	49.6	56.2	70.7	43.9	41.7	32.2	44.17	78.32																							
17-Apr	41.2	49.8	62.0	68.1	96.8	95.5	83.8	42.6	44.4	34.5	53.8	49.8	54.0	47.4	30.6	45.1	50.7	34.9	41.1	44.9	55.7	29.5	33.1	71.1	52.51	96.79																							
18-Apr	61.8	62.7	44.0	57.9	37.2	42.7	32.0	35.6	56.3	31.9	43.3	51.8	79.4	52.4	72.6	71.4	84.3	68.8	85.4	88.0	36.2	52.3	56.5	85.8	57.93	87.96																							
19-Apr	107.6	81.7	75.6	58.2	75.3	38.7	95.5	50.0	52.1	61.8	59.1	46.0	57.2	38.0	50.7	24.4	40.6	51.7	52.6	45.5	50.7	76.1	66.3	87.9	60.14	107.60																							
20-Apr	74.1	50.5	56.3	104.1	52.0	52.3	98.9	43.3	42.7	41.4	24.2	16.9	36.3	75.8	43.8	44.0	53.8	54.5	23.5	29.7	89.1	33.3	65.4	64.4	52.92	104.13																							
21-Apr	76.5	75.5	26.4	28.9	15.7	30.3	36.6	59.4	40.5	38.5	55.9	67.2	60.3	44.2	51.9	26.4	23.3	26.4	49.7	37.9	89.5	57.2	102.4	66.7	49.46	102.35																							
22-Apr	74.5	57.0	100.9	92.3	62.5	82.4	64.2	73.0	87.7	101.9	91.2	51.0	51.4	65.3	44.9	46.7	41.0	44.1	39.1	39.3	80.3	59.3	54.4	96.1	66.68	101.87																							
23-Apr	66.9	74.2	86.5	94.2	83.8	67.1	48.5	35.4	52.5	45.7	37.7	53.3	63.9	50.1	76.1	48.9	53.7	52.9	26.8	39.4	42.8	25.9	36.1	38.6	54.21	94.25																							
24-Apr	45.4	42.4	31.8	36.3	27.8	24.0	30.1	41.7	35.6	42.4	39.1	26.9	35.3	37.6	30.2	26.5	35.7	22.1	22.1	94.9	81.6	35.9	52.0	20.0	38.23	94.94																							
25-Apr	21.5	29.1	35.8	25.7	25.8	21.0	32.7	60.6	49.3	23.7	32.0	37.8	26.9	32.2	40.8	29.6	30.7	31.7	33.8	32.5	41.9	42.2	51.3	57.3	35.24	60.60																							
26-Apr	84.3	51.9	71.9	25.3	42.3	32.5	33.6	46.2	55.3	84.7	51.3	44.8	78.4	78.4	98.5	52.3	86.1	54.2	54.9	47.2	43.1	57.6	103.2	86.7	61.03	103.18																							
27-Apr	42.0	47.7	71.9	51.1	35.8	51.9	89.8	35.5	70.5	85.8	47.4	40.5	54.3	52.1	44.7	39.9	37.5	41.3	25.4	31.0	42.7	74.1	27.7	27.1	48.65	89.77																							
28-Apr	77.8	81.2	73.4	43.3	33.3	55.2	58.0	54.5	44.9	29.9	39.7	83.8	50.4	51.9	50.2	52.2	53.1	46.8	45.3	59.3	49.0	36.6	72.7	35.2	53.24	83.78																							
29-Apr	59.5	48.4	89.6	78.5	68.1	37.2	37.6	65.4	97.8	26.6	25.4	25.2	55.5	47.1	52.8	49.0	46.0	51.9	36.1	42.2	46.5	94.5	95.2	85.1	56.72	97.77																							
30-Apr	36.5	51.3	36.1	39.2	68.9	88.7	67.5	33.1	89.9	42.4	50.0	48.0	52.0	40.9	50.4	43.9	49.8	27.3	28.7	57.3	41.2	71.7	40.9	58.8	50.60	89.93																							
																								57.18	58.66	52.58	53.06	47.25	46.56	51.94	48.80	54.37	51.03	46.86	45.02	47.45	46.44	50.32	43.36	46.57	43.92	39.34	44.04	51.46	51.17	50.48	55.83	Diurnal Average	
																								107.60	92.28	100.93	104.13	96.79	101.37	102.79	94.87	97.77	101.87	91.24	91.59	79.40	79.75	98.52	74.53	86.05	79.45	85.45	94.94	90.04	94.53	103.18	96.07	Diurnal Maximum	
,Alberta Ambient Air Quality Objectives (AAAQO): 1-hr --- ul/m ³ 24-hr 100 ul/m ³																																																	

WEST CENTRAL AIRSHED SOCIETY

**CONTINUOUS AMBIENT AIR QUALITY
MONITORING PROGRAM
MONTHLY REPORT**

**END OF REPORT
APRIL 2015**